

## 10-9559: Recombinant Rabbit Monoclonal Antibody to Dimethylated Histone H3 Lysine 23, H3K23me2 (Clone: RM171)(Discontinued)

<b>Clonality :</b>	Monoclonal
<b>Clone Name :</b>	RM171
<b>Application :</b>	WB,ELISA,Multiplex
<b>Reactivity :</b>	All Species
<b>Gene :</b>	H3F3A
<b>Gene ID :</b>	3020
<b>Uniprot ID :</b>	P84243
<b>Format :</b>	Purified
<b>Alternative Name :</b>	Histone H3.3
<b>Isotype :</b>	Rabbit IgG
<b>Immunogen Information :</b>	A dimethyl-peptide corresponding to Dimethyl-Histone H3 (Lys23).

### Product Info

<b>Amount :</b>	100 µg
<b>Purification :</b>	Protein A affinity purified from an animal origin-free culture supernatant
<b>Content :</b>	1 mg/ml in 50% Glycerol/PBS with 1% BSA and 0.09% sodium azide
<b>Storage condition :</b>	Store at -20°C. Avoid repeated freeze and thaw cycles.

### Application Note

Clone RM171 reacts to Histone H3 dimethylated at Lysine 23 (K23me2). No cross reactivity with nonmodified Lysine 23, monomethylated Lysine 23 (K23me1), or other methylations in histone H3. Western Blot: 0.5 Åµg/ml Å²Å² 2 Å²Å²g/ml; ELISA: 0.1 Å²Å²g/ml - 0.5 Å²Å²g/ml; Multiplex: 0.1 Å²Å²g/ml Å²Å² 0.5 Å²Å²g/ml.

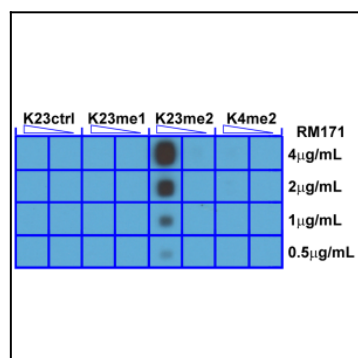


Figure 1: A Peptide dotblot shows Clone: RM171 only reacts to Histone. H3 dimethyl-Lysine 23 (K23me2). No cross reactivity. with nonmodified Lysine 23 (K23Ctrl), monomethylated. Lysine 23 (K23me1), or dimethylated Lysine 4 (K4me2).

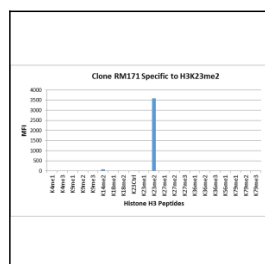


Figure 2: Clone: RM171 specifically reacts to Histone H3 dimethylated at Lysine 23 (K23me2). No cross reactivity with other methylated lysines in Histone H3.

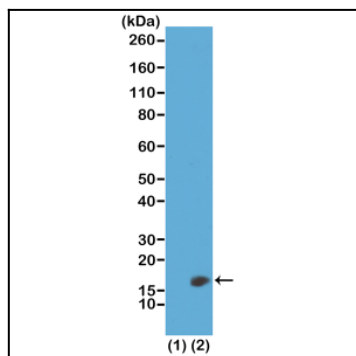


Figure 3: Western Blot of recombinant histone H3.3 (1) and acid extracts of HeLa cells (2), using Clone: RM171 at 0.5  $\mu$ g/ml, showed a band of histone H3 dimethylated at Lysine 23 (K23me<sub>2</sub>) in HeLa cells.