

10-9581: Recombinant Rabbit Monoclonal Antibody to Acetyl-Histone H2B (Lys20) (Clone: RM235)(Discontinued)

Clonality :	Monoclonal
Clone Name :	RM235
Application :	WB,ELISA,Multiplex,ICC
Reactivity :	Human
Gene :	HIST1H2BB
Gene ID :	3018
Uniprot ID :	P33778
Format :	Purified
Alternative Name :	HIST1H2BB, H2BFF
Isotype :	Rabbit IgG
Immunogen Information :	An acetyl-peptide corresponding to Acetyl-Histone H2B (Lys20).

Product Info

Amount :	100 µg
Purification :	Protein A affinity purified from an animal origin-free culture supernatant
Content :	1 mg/ml in 50% Glycerol/PBS with 1% BSA and 0.09% sodium azide
Storage condition :	Store at -20°C. Avoid repeated freeze and thaw cycles.

Application Note

Clone RM235 reacts to Histone H2B acetylated at Lysine 20 (K20ac). No cross reactivity with non-modified Lysine 20 or other acetylated Lysines in histone H2B. Western Blot: 0.5 µg/ml - 2 µg/ml; ELISA: 0.2 µg/ml - 1 µg/ml; Multiplex: 0.1 µg/ml - 0.5 µg/ml; Immunocytochemistry: 1 µg/ml- 2 µg/ml.

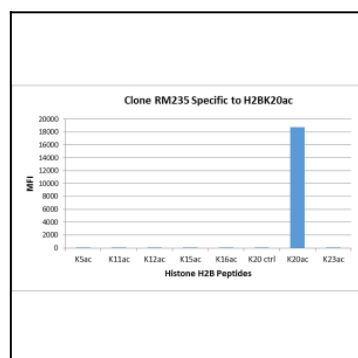


Figure 1: Clone: RM235 specifically reacts to Histone H2B acetylated at Lysine 20 (K20ac). No cross reactivity with non- modified Lysine 20 or other acetylated Lysines in histone H2B.

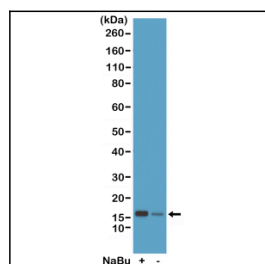


Figure 2: Western Blot of acid extracts from HeLa cells treated (+) or untreated (-) with sodium butyrate, using Clone: RM235 at 0.5 µg/ml.

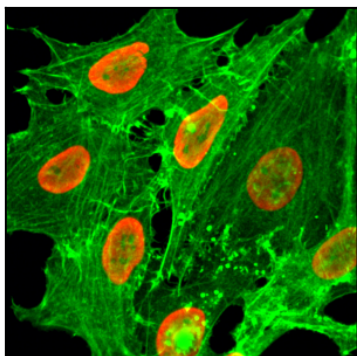


Figure 3: Immunocytochemical staining of HeLa cells treated with sodium butyrate, using anti-Acetyl-Histone H2B (Lys20) Rabbit Monoclonal Antibody (Clone: RM235) (red). Actin filaments have been labeled with fluorescein phalloidin (green).