

10-9582: Recombinant Rabbit Monoclonal Antibody to Acetyl-Histone H2B (Lys23) (Clone: RM260)(Discontinued)

Clonality :	Monoclonal
Clone Name :	RM260
Application :	WB,ELISA,Multiplex,ICC
Reactivity :	Human
Gene :	HIST1H2BB
Gene ID :	3018
Uniprot ID :	P33778
Format :	Purified
Alternative Name :	HIST1H2BB, H2BFF
Isotype :	Rabbit IgG
Immunogen Information :	An acetyl-peptide corresponding to Acetyl-Histone H2B (Lys23).

Product Info

Amount :	100 µg
Purification :	Protein A affinity purified from an animal origin-free culture supernatant
Content :	1 mg/ml in 50% Glycerol/PBS with 1% BSA and 0.09% sodium azide
Storage condition :	Store at -20°C. Avoid repeated freeze and thaw cycles.

Application Note

Clone RM260 reacts to Histone H2B acetylated at Lysine 23 (K23ac). No cross reactivity with other acetylated Lysines in histones. Western Blot: 0.5 µg/ml - 2 µg/ml; ICC: 0.5 µg/ml - 2 µg/ml; ELISA: 0.2 µg/ml - 1 µg/ml; Multiplex: 0.1 µg/ml - 0.5 µg/ml.

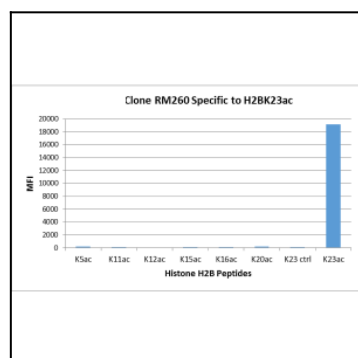


Figure 1: Clone: RM260 specifically reacts to Histone H2B acetylated at Lysine 23 (K23ac). No cross reactivity with acetylated Lysine 5 (K5ac), Lysine 11 (K11ac), Lysine 12 (K12ac), Lysine 15 (K15ac), Lysine 20 (K20ac), or non-mordified Lysine 23 in histone H2B.

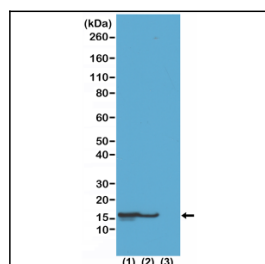


Figure 2: Western Blot of (1) acid extracts of HeLa cells treated with sodium butyrate, (2) acid extracts of HeLa cells untreated, and (3) recombinant Histone H2B, using Acetyl-Histone H2B (Lys23) rabbit monoclonal antibody (Clone: RM260) at 0.5 µg/ml.

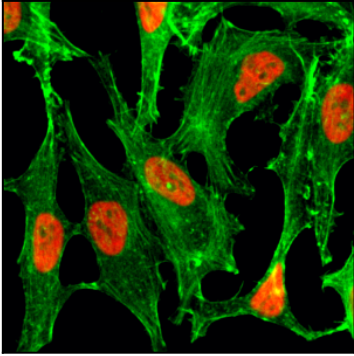


Figure 3: Immunocytochemistry of HeLa cells treated with sodium butyrate, using Acetyl-Histone H2B (Lys23) rabbit monoclonal antibody (Clone: RM260) (red). Actin filaments have been labeled with fluorescein phalloidin (green).