

10-9583: Recombinant Rabbit Monoclonal Antibody to Phospho-Histone H2B (Ser14) (Clone: RM238)(Discontinued)

Clonality :	Monoclonal
Clone Name :	RM238
Application :	ELISA, WB, Multiplex
Reactivity :	Human
Gene :	HIST1H2BB
Gene ID :	3018
Uniprot ID :	P33778
Format :	Purified
Alternative Name :	HIST1H2BB, H2BFF
Isotype :	Rabbit IgG
Immunogen Information :	A phospho-peptide corresponding to Phospho-Histone H2B (Ser14).

Product Info

Amount :	100 µg
Purification :	Protein A affinity purified from an animal origin-free culture supernatant
Content :	1 mg/ml in 50% Glycerol/PBS with 1% BSA and 0.09% sodium azide
Storage condition :	Store at -20°C. Avoid repeated freeze and thaw cycles.

Application Note

Clone RM238 reacts to Histone H2B only when phosphorylated at serine 14. No cross reactivity with other phosphorylated histones. Western Blot: 0.5 µg/ml - 2 µg/ml; ICC: 1 µg/ml - 2 µg/ml; ELISA: 0.2 µg/ml - 1 µg/ml; Multiplex: 0.1 µg/ml - 1 µg/ml.

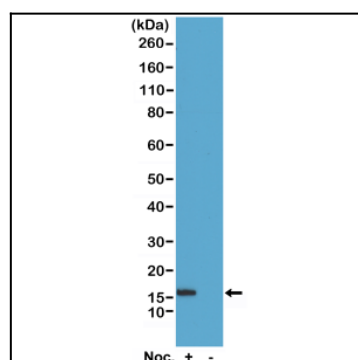


Figure 1: Western Blot of acid extracts of HeLa cells treated or non-treated with Nocodazole. Using Clone: RM238 at 0.5 µg/ml, showed a band of Histone H2B phosphorylated at Serine 14 in HeLa cells.

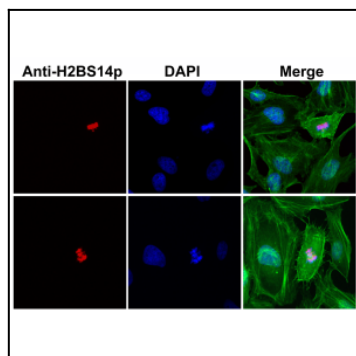


Figure 2: Immunocytochemistry of HeLa cells using Anti-Phospho-Histone H2B (Ser14) Rabbit mAb Clone: RM238 (red) and DAPI (blue). Actin filaments have been labeled with fluorescein phalloidin (green).