

10-9584: Recombinant Rabbit Monoclonal Antibody to Gamma H2AX (phospho-Ser139) (Clone: RM224)(Discontinued)

Clonality :	Monoclonal
Clone Name :	RM224
Application :	WB,ELISA,Multiplex,ICC
Reactivity :	All Species
Gene :	H2AFX
Gene ID :	3014
Uniprot ID :	P16104
Format :	Purified
Alternative Name :	Histone H2A.X, H2AX
Isotype :	Rabbit IgG
Immunogen Information :	A phospho-peptide corresponding to Phospho-Histone H2AX (Ser139)

Product Info

Amount :	100 µg
Purification :	Protein A affinity purified from an animal origin-free culture supernatant
Content :	1 mg/ml in 50% Glycerol/PBS with 1% BSA and 0.09% sodium azide
Storage condition :	Store at -20°C. Avoid repeated freeze and thaw cycles.

Application Note

Clone RM224 reacts to Histone H2A.X only when phosphorylated at serine 139. No cross reactivity with other phosphorylated histones. Western Blot: 0.5 Åµg/ml Åµg 2 Åµg/ml; ELISA: 0.2 Åµg/ml - 1 Åµg/ml; Multiplex: 0.1 Åµg/ml Åµg 1 Åµg/ml; ICC: 0.5 Åµg/ml - 2 Åµg/ml.

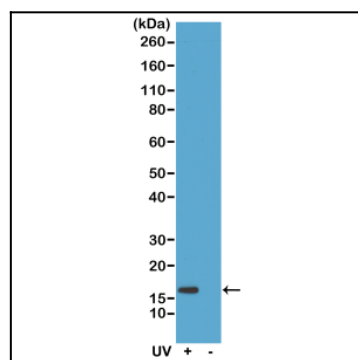


Figure 1: Western Blot of acid extracts of HeLa cells treated or non-treated with UV. Using Clone: RM224 at 0.5 µg/ml, showed a band of Histone H2A.X phosphorylated at serine 139 in HeLa cells.

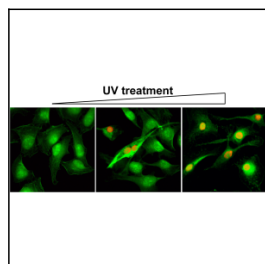


Figure 2: Immunocytochemistry of HeLa cells using gamma H2AX Rabbit mAb Clone: RM224 (red). Actin filaments have been labeled with fluorescein phalloidin (green).