

10-9587: Recombinant Rabbit Monoclonal Antibody to Core Histone Macro H2A.1 (H2AFY) (Clone: RM248)(Discontinued)

Clonality :	Monoclonal
Clone Name :	RM248
Application :	ELISA, WB, Multiplex
Reactivity :	Human
Gene :	H2afy
Gene ID :	26914
Uniprot ID :	Q9QZQ8
Format :	Purified
Alternative Name :	H2A/y, H2A/y
Isotype :	Rabbit IgG
Immunogen Information :	A peptide corresponding to the C-terminus of human Histone macroH2A1.

Product Info

Amount :	100 µg
Purification :	Protein A affinity purified from an animal origin-free culture supernatant
Content :	1 mg/ml in 50% Glycerol/PBS with 1% BSA and 0.09% sodium azide
Storage condition :	Store at -20°C. Avoid repeated freeze and thaw cycles.

Application Note

Clone RM248 reacts to the Core histone macro-H2A.1 (Histone macroH2A1) protein, independent of post-translational modifications. No cross reactivity with other histone proteins. Western Blot: 0.5 µg/ml - 2 µg/ml; ICC: 1 µg/ml - 2 µg/ml; ELISA: 0.2 µg/ml - 1 µg/ml; Multiplex: 0.2 µg/ml - 1 µg/ml.

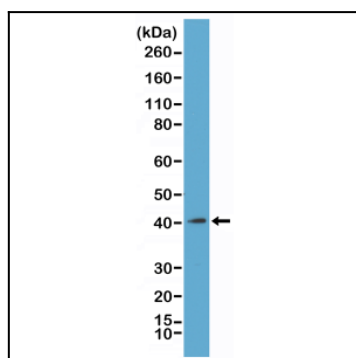


Figure 1: Western Blot of acid extracts from K562 cells, using Clone: RM248 at 1 µg/ml.

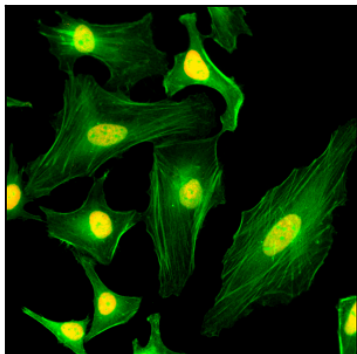


Figure 2: Immunocytochemistry of HeLa cells, using anti-Histone macro H2A1 Rabbit mAb Clone: RM248 (red). Actin filaments have been labeled with fluorescein phalloidin (green).