

10-9588: Recombinant Rabbit Monoclonal Antibody to Histone H2A (Clone: RM225)(Discontinued)

| | |
|--------------------------------|--|
| Clonality : | Monoclonal |
| Clone Name : | RM225 |
| Application : | ELISA, WB, Multiplex |
| Gene : | HIST1H2AB |
| Gene ID : | 3012 |
| Uniprot ID : | P04908, |
| Format : | Purified |
| Alternative Name : | Histone H2A.2, Histone H2A/a, Histone H2A/m |
| Isotype : | Rabbit IgG |
| Immunogen Information : | A peptide corresponding to the C-terminus of human Histone H2A |

Product Info

| | |
|----------------------------|--|
| Amount : | 100 µg |
| Purification : | Protein A affinity purified from an animal origin-free culture supernatant |
| Content : | 1 mg/ml in 50% Glycerol/PBS with 1% BSA and 0.09% sodium azide |
| Storage condition : | Store at -20°C. Avoid repeated freeze and thaw cycles. |

Application Note

Clone RM225 reacts to the Histone H2A protein, independent of post-translational modifications. No cross reactivity with other histone proteins. Western Blot: 0.5 µg/ml - 2 µg/ml; ICC: 1 µg/ml - 2 µg/ml; ELISA: 0.2 µg/ml - 1 µg/ml; Multiplex: 0.2 µg/ml - 1 µg/ml.

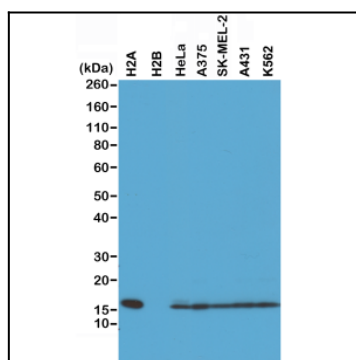


Figure 1: Western Blot of recombinant Histone H2A, H2B, the whole cell lysates of HeLa, A375, SK-MEL-2, A431, and K562, using Clone: RM225 at 0.5 µg/ml

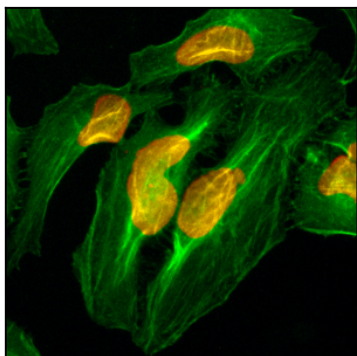


Figure 2: Immunocytochemistry of HeLa cells, using Anti-Histone H2A Rabbit mAb Clone: RM225 (red). Actin filaments have been labeled with fluorescein phalloidin (green).