

10-9589: Recombinant Rabbit Monoclonal Antibody to Histone H2B (Clone: RM230)(Discontinued)

Clonality :	Monoclonal
Clone Name :	RM230
Application :	ELISA, WB, Multiplex
Reactivity :	Human
Gene :	HIST1H2BJ
Gene ID :	8970
Uniprot ID :	P06899
Format :	Purified
Alternative Name :	Histone H2B.1, Histone H2B.r
Isotype :	Rabbit IgG
Immunogen Information :	A peptide corresponding to the C-terminus of human Histone H2B.

Product Info

Amount :	100 µg
Purification :	Protein A affinity purified from an animal origin-free culture supernatant
Content :	1 mg/ml in 50% Glycerol/PBS with 1% BSA and 0.09% sodium azide
Storage condition :	Store at -20°C. Avoid repeated freeze and thaw cycles.

Application Note

Clone RM230 reacts to the Histone H2B protein, independent of post-translational modifications. No cross reactivity with other histone proteins. Western Blot: 0.1 µg/ml - 1 µg/ml; ICC: 0.5 µg/ml - 1 µg/ml; ELISA: 0.2 µg/ml - 1 µg/ml; Multiplex: 0.2 µg/ml - 1 µg/ml.

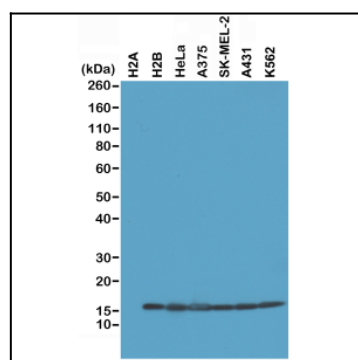


Figure 1: Western Blot of recombinant Histone H2A, H2B, the whole cell lysates of HeLa, A375, SK-MEL-2, A431, and K562, using Clone: RM230 at 0.2 µg/ml

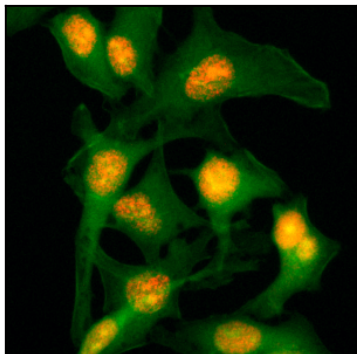


Figure 2: Immunocytochemical staining of HeLa cells, using Anti-Histone H2B Rabbit mAb Clone: RM230 (red). Actin filaments have been labeled with fluorescein phalloidin (green).