

10-9590: Recombinant Rabbit Monoclonal Antibody to Histone H2AX (Clone: RM214)(Discontinued)

| | |
|--------------------------------|---|
| Clonality : | Monoclonal |
| Clone Name : | RM214 |
| Application : | WB,ELISA,Multiplex,ICC |
| Reactivity : | All Species |
| Gene : | H2AFX |
| Gene ID : | 3014 |
| Uniprot ID : | P16104 |
| Format : | Purified |
| Alternative Name : | Histone H2A.X, H2AX |
| Isotype : | Rabbit IgG |
| Immunogen Information : | A peptide corresponding to the C-terminus of human Histone H2AX |

Product Info

| | |
|----------------------------|--|
| Amount : | 100 µg |
| Purification : | Protein A affinity purified from an animal origin-free culture supernatant |
| Content : | 1 mg/ml in 50% Glycerol/PBS with 1% BSA and 0.09% sodium azide |
| Storage condition : | Store at -20°C. Avoid repeated freeze and thaw cycles. |

Application Note

Clone RM214 reacts to Histone H2AX protein, independent of post-translational modifications. No cross reactivity with other histone proteins. . Western Blot: 0.5 Âµg/ml Â– 2 Âµg/ml; ICC: 1 Âµg/ml - 2 Âµg/ml; ELISA: 0.2 Âµg/ml - 1 Âµg/ml; Multiplex: 0.2 Âµg/ml Â– 1 Âµg/ml.

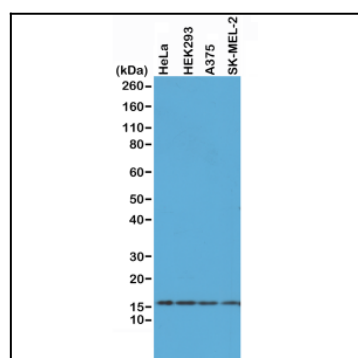


Figure 1: Western Blot of A375, HEK293, HeLa and SK-MEL-2 whole cell lysates, using Clone: RM214 at 0.5 µg/ml, showed endogenous Histone H2AX in A375, HEK293, HeLa and SK-MEL-2 cells.

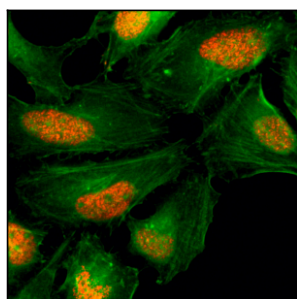


Figure 2: Immunocytochemistry of HeLa cells, using Histone H2AX Rabbit mAb Clone: RM214 (red). Actin filaments have been labeled with fluoresceinphalloidin (green).