

10-9591: Recombinant Rabbit Monoclonal Antibody to Histone H2AZ (Clone: RM215)(Discontinued)

Clonality :	Monoclonal
Clone Name :	RM215
Application :	ELISA, WB, Multiplex
Gene :	H2AFZ
Gene ID :	3015
Uniprot ID :	P0C0S5
Format :	Purified
Alternative Name :	H2AFZ, H2AZ
Isotype :	Rabbit IgG
Immunogen Information :	A peptide corresponding to the C-terminus of human Histone H2AZ

Product Info

Amount :	100 µg
Purification :	Protein A affinity purified from an animal origin-free culture supernatant
Content :	1 mg/ml in 50% Glycerol/PBS with 1% BSA and 0.09% sodium azide
Storage condition :	Store at -20°C. Avoid repeated freeze and thaw cycles.

Application Note

Clone RM215 reacts to Histone H2AZ protein, independent of post-translational modifications. No cross reactivity with other histone proteins. . Western Blot: 0.1 µg/ml - 0.5 µg/ml; ICC: 1 µg/ml - 2 µg/ml; ELISA: 0.1 µg/ml - 1 µg/ml; Multiplex: 0.1 µg/ml - 1 µg/ml.

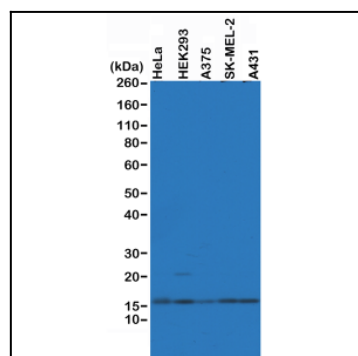


Figure 1: Western Blot of A375, HEK293, HeLa and SK-MEL-2 whole cell lysates, using Clone: RM215 at 0.5 µg/ml, showed endogenous Histone H2AZ in A375, HEK293, HeLa and SK-MEL-2 cells.

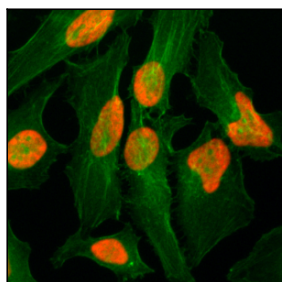


Figure 2: Immunocytochemistry of HeLa cells, using Anti-Histone H2AZ Rabbit mAb Clone: RM215 (red). Actin filaments have been labeled with fluorescein phalloidin (green).