

## 10-9599: Recombinant Rabbit Monoclonal Antibody to HER2 (Clone: RM228)(Discontinued)

<b>Clonality :</b>	Monoclonal
<b>Clone Name :</b>	RM228
<b>Application :</b>	IHC,WB
<b>Reactivity :</b>	Human
<b>Gene :</b>	ERBB2
<b>Gene ID :</b>	2064
<b>Uniprot ID :</b>	P04626
<b>Format :</b>	Purified
<b>Alternative Name :</b>	ERBB2, HER2, MLN19, NEU, NGL
<b>Isotype :</b>	Rabbit IgG
<b>Immunogen Information :</b>	A peptide corresponding to the C-terminus of Human c-erbB-2/HER-2

### Product Info

<b>Amount :</b>	100 µl
<b>Purification :</b>	Protein A affinity purified from an animal origin-free culture supernatant
<b>Content :</b>	Antibody in 50% Glycerol/PBS with 1% BSA and 0.09% sodium azide
<b>Storage condition :</b>	Store at -20°C. Avoid repeated freeze and thaw cycles.

### Application Note

Clone RM228 reacts to Human c-erbB-2/HER-2. This antibody may also react to mouse or rat c-erbB-2/HER-2, as predicted by immunogen homology. Immunohistochemistry (IHC): 1:100 - 1:400 dilution; Western Blot (WB): 1:1000 dilution.

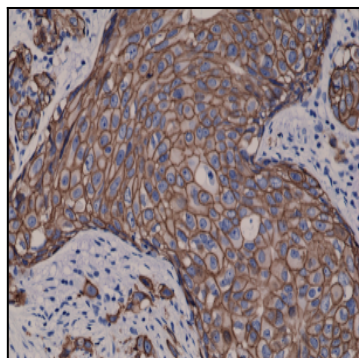


Figure 1: Immunohistochemical staining of FFPE human breast cancer tissue sections, using Anti-HER2 (c-erbB-2) Rabbit Monoclonal antibody Clone: RM228.

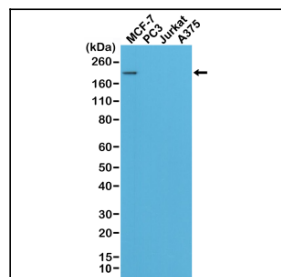


Figure 2: Western Blot of MCF-7, PC3, Jurkat, and A375 cell lysates using Clone: RM228, showed a band of Her2 expressed only in MCF-7 cells.