

## 10-9600: Recombinant Rabbit Monoclonal Antibody to Acetyl-CoA Carboxylase 1 (Clone: RM232)(Discontinued)

<b>Clonality :</b>	Monoclonal
<b>Clone Name :</b>	RM232
<b>Application :</b>	WB,IHC
<b>Reactivity :</b>	Human,Rat, Mouse
<b>Gene :</b>	ACACA
<b>Gene ID :</b>	31 , 32
<b>Uniprot ID :</b>	Q13085 , O00763
<b>Format :</b>	Purified
<b>Alternative Name :</b>	ACACA, ACAC, ACC1, ACCA
<b>Isotype :</b>	Rabbit IgG
<b>Immunogen Information :</b>	A peptide corresponding to human Acetyl CoA Carboxylase 1.

### Product Info

<b>Amount :</b>	100 µl
<b>Purification :</b>	Protein A affinity purified from an animal origin-free culture supernatant
<b>Content :</b>	Antibody in 50% Glycerol/PBS with 1% BSA and 0.09% sodium azide
<b>Storage condition :</b>	Store at -20°C. Avoid repeated freeze and thaw cycles.

### Application Note

Clone RM232 reacts to human Acetyl CoA Carboxylase 1. This antibody may also react to mouse or rat Acetyl CoA Carboxylase 1, as predicted by immunogen homology. Immunohistochemistry (IHC): 1:300-1:500 dilution; Western Blot (WB): 1:1000-1:2000 dilution.

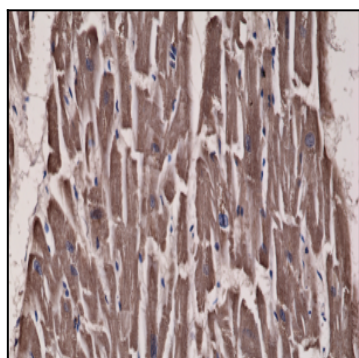


Figure 1: Immunohistochemical staining of formalin fixed and paraffin embedded human heart tissue sections using Anti-Acetyl CoA Carboxylase 1 Clone: RM232 at a 1:300 dilution.