

10-9602: Recombinant Rabbit Monoclonal Antibody to Desmin (DESM) (Clone: RM234)(Discontinued)

Clonality :	Monoclonal
Clone Name :	RM234
Application :	WB,IHC
Reactivity :	Human, Mouse,Bovine, Rat
Gene :	DES
Gene ID :	1674
Uniprot ID :	P17661
Format :	Purified
Alternative Name :	DES
Isotype :	Rabbit IgG
Immunogen Information :	A peptide corresponding to human Desmin

Product Info

Amount :	100 µl
Purification :	Protein A affinity purified from an animal origin-free culture supernatant
Content :	Antibody in 50% Glycerol/PBS with 1% BSA and 0.09% sodium azide
Storage condition :	Store at -20°C. Avoid repeated freeze and thaw cycles.

Application Note

Clone RM234 reacts to human and mouse Desmin. This antibody may also react to rat and Bovine Desmin, as predicted by immunogen homology. Immunohistochemistry (IHC): 1:1000-1:4000 dilution; Western Blot (WB): 1:1000-1:2000 dilution.

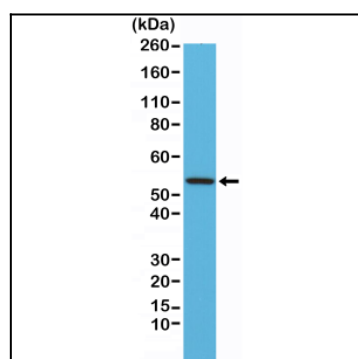


Figure 1: Western Blot of mouse heart tissue lysates using Anti-Desmin Clone: RM234 at a 1:1000 dilution, showed a band of Desmin (~54 kDa) expressed in mouse heart.