

10-9607: Recombinant Rabbit Monoclonal Antibody to p38 MAPK (Clone: RM245)(Discontinued)

Clonality :	Monoclonal
Clone Name :	RM245
Application :	WB,IHC
Reactivity :	Human,Rat, Mouse
Gene :	MAPK14
Gene ID :	1432 , 5600 , 6300
Uniprot ID :	Q16539 , Q15759 , P53778
Format :	Purified
Alternative Name :	MAPK14, CSBP, CSBP1, CSBP2, CSPB1, MXI2, SAPK2A
Isotype :	Rabbit IgG
Immunogen Information :	A peptide corresponding to human p38 MAPK.

Product Info

Amount :	100 µl
Purification :	Protein A affinity purified from an animal origin-free culture supernatant
Content :	Antibody in 50% Glycerol/PBS with 1% BSA and 0.09% sodium azide
Storage condition :	Store at -20°C. Avoid repeated freeze and thaw cycles.

Application Note

Clone RM245 reacts to human p38 MAPK. This antibody may also react to rat and mouse p38 MAPK, as predicted by immunogen homology. Immunohistochemistry (IHC): 1:1000-1:5000 dilution; Western Blot (WB): 1:1000-1:2000 dilution.

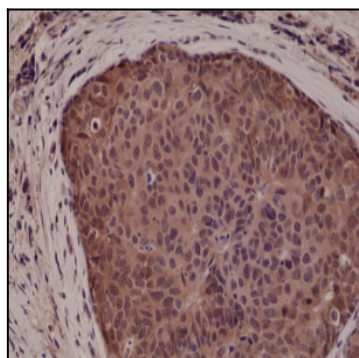


Figure 1: Immunohistochemical staining of formalin fixed and paraffin embedded human breast cancer tissue sections using Anti-p38 MAPK Clone: RM245 at a 1:5000 dilution.