

10-9610: Recombinant Rabbit Monoclonal Antibody to CD146, MCAM, MUC18 (Clone: RM249)(Discontinued)

Clonality :	Monoclonal
Clone Name :	RM249
Application :	WB,IHC
Reactivity :	Human,Mouse, Rat
Gene :	MCAM
Gene ID :	4162
Uniprot ID :	P43121
Format :	Purified
Alternative Name :	MCAM, MUC18
Isotype :	Rabbit IgG
Immunogen Information :	A synthetic peptide corresponding to the residues near C-terminus of human CD146

Product Info

Amount :	100 µl
Purification :	Protein A affinity purified from an animal origin-free culture supernatant
Content :	Antibody in 50% Glycerol/PBS with 1% BSA and 0.09% sodium azide
Storage condition :	Store at -20°C. Avoid repeated freeze and thaw cycles.

Application Note

Clone RM249 reacts to human CD146 (Cell surface glycoprotein MUC18). This antibody may also react to mouse or rat CD146, as predicted by immunogen homology. Immunohistochemistry (IHC): 1:200-1:500 dilution; Western Blot (WB): 1:1000-1:2000 dilution.

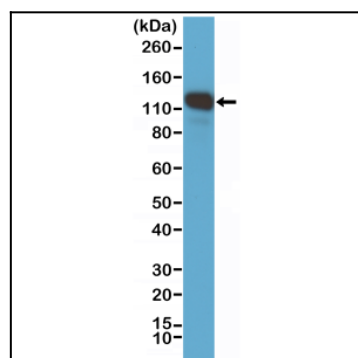


Figure 1: Western Blot of A375 cell lysate, using Anti-CD146 Clone: RM249 at a 1:1000 dilution, showed CD146 (~110 kDa) expression in A375 cells.