

10-9613: Recombinant Rabbit Monoclonal Antibody to alpha smooth muscle Actin (ACTA2) (Clone: RM253)(Discontinued)

Clonality :	Monoclonal
Clone Name :	RM253
Application :	WB,IHC
Reactivity :	Human, Mouse,Bovine, Rat
Gene :	ACTA2
Gene ID :	59
Uniprot ID :	P62736
Format :	Purified
Alternative Name :	ACTA2, ACTSA, ACTVS, GIG46
Isotype :	Rabbit IgG
Immunogen Information :	A synthetic peptide corresponding to the N-terminus of human alpha smooth muscle Actin

Product Info

Amount :	100 µl
Purification :	Protein A affinity purified from an animal origin-free culture supernatant
Content :	Antibody in 50% Glycerol/PBS with 1% BSA and 0.09% sodium azide
Storage condition :	Store at -20°C. Avoid repeated freeze and thaw cycles.

Application Note

Clone RM253 reacts to human and mouse alpha smooth muscle Actin (alpha-Actin-2). This antibody may also react to bovine or rat alpha smooth muscle Actin, as predicted by immunogen homology Immunohistochemistry (IHC): 1:1000-1:2500 dilution; Western Blot (WB): 1:1000-1:2000 dilution.

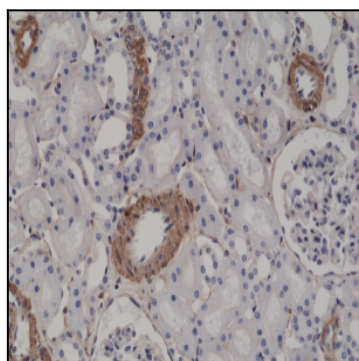


Figure 1: Immunohistochemical staining of formalin fixed and paraffin embedded human kidney tissue sections using Anti-alpha smooth muscle Actin Clone: RM253 at a 1:2500 dilution.

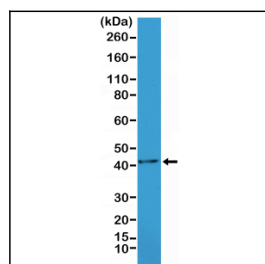


Figure 2: Western Blot of mouse heart tissue lysate, using Anti-alpha smooth muscle Actin Clone: RM253 at a 1:1000 dilution.