

10-9614: Recombinant Rabbit Monoclonal Antibody to Akt1 (Clone: RM252)(Discontinued)

Clonality :	Monoclonal
Clone Name :	RM252
Application :	WB,IHC
Reactivity :	Human,Mouse, Rat
Gene :	AKT1
Gene ID :	207
Uniprot ID :	P31749
Format :	Purified
Alternative Name :	AKT1, PKB, RAC
Isotype :	Rabbit IgG
Immunogen Information :	A synthetic peptide corresponding to the C-terminus of human Akt1

Product Info

Amount :	100 µl
Purification :	Protein A affinity purified from an animal origin-free culture supernatant
Content :	Antibody in 50% Glycerol/PBS with 1% BSA and 0.09% sodium azide
Storage condition :	Store at -20°C. Avoid repeated freeze and thaw cycles.

Application Note

Clone RM252 reacts to human Akt1. This antibody may also react to bovine, mouse or rat Akt1, as predicted by immunogen homology. Immunohistochemistry (IHC): 1:500-1:1000 dilution; Western Blot (WB): 1:1000-1:2000 dilution.

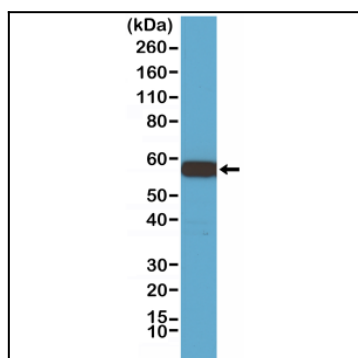


Figure 1: Western Blot of 293 cell lysate, using Anti-Akt1 Clone: RM252 at a 1:1000 dilution, showed Akt1 (~56 kDa) expression in 293 cells.