

## 10-9619: Recombinant Rabbit Monoclonal Antibody to Alpha Cardiac Actin (ACTC1) (Clone: RM257)(Discontinued)

<b>Clonality :</b>	Monoclonal
<b>Clone Name :</b>	RM257
<b>Application :</b>	WB,IHC
<b>Reactivity :</b>	Human, Mouse,Rat, Bovine
<b>Gene :</b>	ACTC1
<b>Gene ID :</b>	70
<b>Uniprot ID :</b>	P68032
<b>Format :</b>	Purified
<b>Alternative Name :</b>	ACTC1, ACTC
<b>Isotype :</b>	Rabbit IgG
<b>Immunogen Information :</b>	A synthetic peptide corresponding to the N-terminus of human alpha-cardiac actin

### Product Info

<b>Amount :</b>	100 µl
<b>Purification :</b>	Protein A affinity purified from an animal origin-free culture supernatant
<b>Content :</b>	Antibody in 50% Glycerol/PBS with 1% BSA and 0.09% sodium azide
<b>Storage condition :</b>	Store at -20°C. Avoid repeated freeze and thaw cycles.

### Application Note

Clone RM257 reacts to human and mouse alpha cardiac actin (Actin, alpha cardiac muscle 1). This antibody may also react to bovine or rat alpha-cardiac actin, as predicted by immunogen homology Immunohistochemistry (IHC): 1:1000-1:2000 dilution; Western Blot (WB): 1:1000-1:2000 dilution.

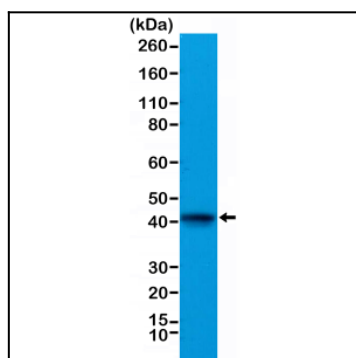


Figure 1: Western Blot of mouse heart tissue lysate, using Anti-alpha cardiac actin Clone: RM257 at a 1:1000 dilution.