

10-9620: Recombinant Rabbit Monoclonal Antibody to Phospho-Stat3 (Tyr705), STAT3 (phospho Tyr705) (Clone: RM261)(Discontinued)

Clonality :	Monoclonal
Clone Name :	RM261
Application :	WB,IHC
Reactivity :	Human,Mouse, Rat
Gene :	STAT3
Gene ID :	6774
Uniprot ID :	P40763
Format :	Purified
Alternative Name :	STAT3, APRF
Isotype :	Rabbit IgG
Immunogen Information :	A phospho-peptide corresponding to human Phospho- Stat3 (Tyr705)

Product Info

Amount :	100 µl
Purification :	Protein A affinity purified from an animal origin-free culture supernatant
Content :	Antibody in 50% Glycerol/PBS with 1% BSA and 0.09% sodium azide
Storage condition :	Store at -20°C. Avoid repeated freeze and thaw cycles.

Application Note

Clone RM261 reacts to human Stat3 only when phosphorylated at Tyr705. There is no cross-reactivity to stat3 without phosphorylation at Tyr705. This antibody may also react to mouse or rat Phospho-Stat3 (Tyr705), as predicted by immunogen homology. Immunohistochemistry (IHC): 1:1000-1:10,000 dilution; Western Blot (WB): 1:1000-1:2000 dilution.

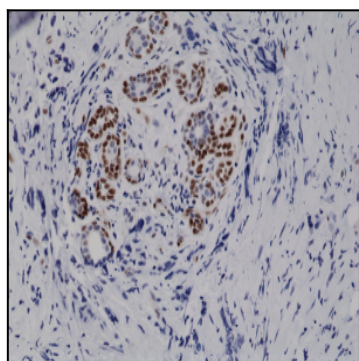


Figure 1: Immunohistochemical staining of formalin fixed and paraffin embedded human breast cancer tissue sections using Anti-Phospho-Stat3 (Tyr705) Rabbit Monoclonal Antibody (Clone: RM261) at a 1:10,000 dilution.