

10-6501: Mouse Monoclonal Antibody to Bi-Phospho-MET/HGFR(Y1234/Y1235) (Clone: 6AT1877)(Discontinued)

Clonality :	Monoclonal
Clone Name :	6AT1877
Application :	WB
Reactivity :	Mouse,Human
Gene :	MET
Gene ID :	4233
Uniprot ID :	P08581
Format :	Purified
Alternative Name :	Hepatocyte growth factor receptor, HGF receptor, HGF/SF receptor, Proto-oncogene c-Met, Scatter factor receptor, SF receptor, Tyrosine-protein kinase Met, MET
Isotype :	Mouse IgG1

Description

The proto-oncogene MET product is the hepatocyte growth factor receptor and encodes tyrosine-kinase activity. The primary single chain precursor protein is post-translationally cleaved to produce the alpha and beta subunits, which are disulfide linked to form the mature receptor. Various mutations in the MET gene are associated with papillary renal carcinoma. Two transcript variants encoding different isoforms have been found for this gene.

Product Info

Amount :	80 µl / 400 µl
Purification :	Protein G Chromatography
Content :	Purified monoclonal antibody supplied in PBS with 0.09% (W/V) sodium azide.
Storage condition :	Maintain refrigerated at 2-8°C for up to 2 weeks. For long term store at -20°C in small aliquots to prevent freeze-thaw cycles.

Application Note

WB~1:100~500

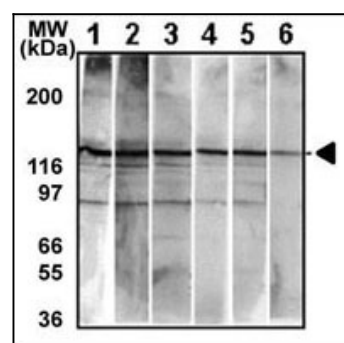


Figure 1: Detection of endogenous Met antibody (10-6501) in HepG2 cell line. 10 μ g/lane of HepG2 cell lysate was used to examine the expression of human Met. Lanes 1-5 represent different anti-Met monoclonal antibodies and Lane 6 represents auto-phosphorylated-Met in HepG2 cell line detected by anti-phospho-Met Mab.