

10-6515: Mouse Monoclonal Antibody to GLT (Clone: 24CT661.4.3)(Discontinued)

Clonality :	Monoclonal
Clone Name :	24CT661.4.3
Application :	WB
Reactivity :	Human
Gene :	LGALS1
Gene ID :	3956
Uniprot ID :	P09382
Format :	Ascites
Alternative Name :	Galectin-1, Gal-1, 14 kDa laminin-binding protein, HLBP14, 14 kDa lectin, Beta-galactoside-binding lectin L-14-I, Galaptin, HBL, HPL, Lactose-binding lectin 1, Lectin galactoside-binding soluble 1, Putative MAPK-activating protein PM12, S-Lac lectin 1, LGALS1
Isotype :	Mouse IgG1
Immunogen Information :	Recombinant Protein

Description

The galectins are a family of beta-galactoside-binding proteins implicated in modulating cell-cell and cell-matrix interactions. This gene product may act as an autocrine negative growth factor that regulates cell proliferation.

Product Info

Amount :	0.1 ml
Content :	Mouse monoclonal antibody supplied in crude ascites with 0.09% (W/V) sodium azide.
Storage condition :	Maintain refrigerated at 2-8°C for up to 2 weeks. For long term store at -20°C in small aliquots to prevent freeze-thaw cycles.

Application Note

WB~1:1000

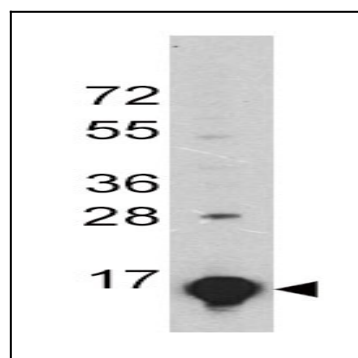


Figure 1: Western blot analysis of GLT Monoclonal Antibody (10-6515) in A375 cell line lysates. GLT was detected using the ascites Mab with dilution 1:1000.