

## 10-6520: Mouse Monoclonal Antibody to SUMO1 (Clone: 66AT1320)(Discontinued)

<b>Clonality :</b>	Monoclonal
<b>Clone Name :</b>	66AT1320
<b>Application :</b>	WB
<b>Reactivity :</b>	Human
<b>Gene :</b>	SUMO1
<b>Gene ID :</b>	7341
<b>Uniprot ID :</b>	P63165
<b>Format :</b>	Purified
<b>Alternative Name :</b>	Small ubiquitin-related modifier 1, SUMO-1, GAP-modifying protein 1, GMP1, SMT3 homolog 3, Sentrin, Ubiquitin-homology domain protein PIC1, Ubiquitin-like protein SMT3C, Smt3C, Ubiquitin-like protein UBL1, SUMO1, SMT3C, SMT3H3, UBL1
<b>Isotype :</b>	Mouse IgG1

### Description

This gene encodes a protein that is a member of the SUMO (small ubiquitin-like modifier) protein family. It functions in a manner similar to ubiquitin in that it is bound to target proteins as part of a post-translational modification system. However, unlike ubiquitin which targets proteins for degradation, this protein is involved in a variety of cellular processes, such as nuclear transport, transcriptional regulation, apoptosis, and protein stability. It is not active until the last four amino acids of the carboxy-terminus have been cleaved off. Several pseudogenes have been reported for this gene. Alternate transcriptional splice variants encoding different isoforms have been characterized.

### Product Info

<b>Amount :</b>	80 µl / 400 µl
<b>Purification :</b>	Protein G Chromatography
<b>Content :</b>	Purified monoclonal antibody supplied in PBS with 0.09% (W/V) sodium azide.
<b>Storage condition :</b>	Maintain refrigerated at 2-8°C for up to 2 weeks. For long term store at -20°C in small aliquots to prevent freeze-thaw cycles.

### Application Note

WB~1:100~500

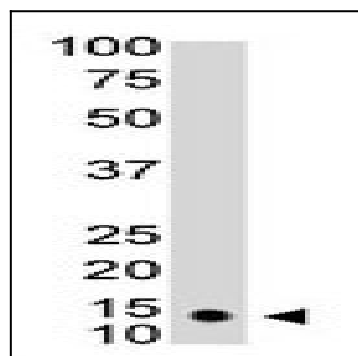


Figure 1: The anti-SUMO1 monoclonal antibody(10-6520 ) is used in Western blot to detect SUMO1 in HL60 cell lysate.