

10-6523: Mouse Monoclonal Antibody to LIN28A (Clone: 55CT58.12.1)(Discontinued)

Clonality :	Monoclonal
Clone Name :	55CT58.12.1
Application :	WB,IHC-P,IF
Reactivity :	Human
Gene :	LIN28A
Gene ID :	79727
Uniprot ID :	Q9H9Z2
Format :	Purified
Alternative Name :	Protein lin-28 homolog A, Lin-28A, Zinc finger CCHC domain-containing protein 1, LIN28A, CSDD1, LIN28, ZCCHC1
Isotype :	Mouse IgG1 Kappa
Immunogen Information :	Recombinant Protein

Product Info

Amount :	80 µl / 400 µl
Purification :	Protein G Chromatography
Content :	Purified monoclonal antibody supplied in PBS with 0.09% (W/V) sodium azide.
Storage condition :	Maintain refrigerated at 2-8°C for up to 2 weeks. For long term store at -20°C in small aliquots to prevent freeze-thaw cycles.

Application Note

WB~1:200~2000|| IHC-P~1:50~200|| IF~1:10~50

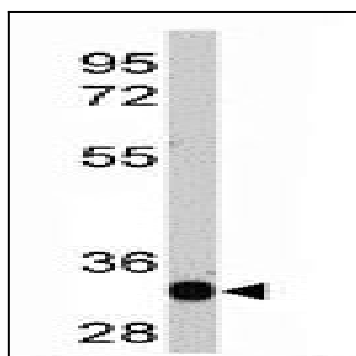


Figure 1: Western blot analysis of LIN28 recombinant protein by anti-LIN28A Monoclonal Antibody (10-6523). LIN28 was detected using the purified Mab.

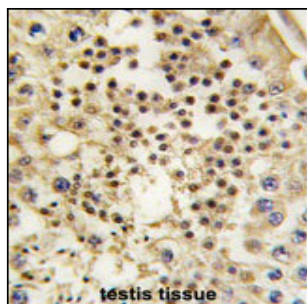


Figure 2: Formalin-fixed and paraffin-embedded human testis tissue reacted with LIN28A Monoclonal Antibody (10-6523), which was peroxidase-conjugated to the secondary antibody, followed by DAB staining. This data demonstrates the use of this antibody for immunohistochemistry; clinical relevance has not been evaluated.

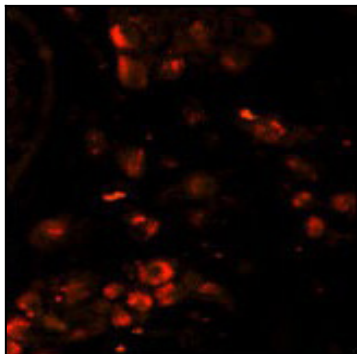


Figure 3: Immunofluorescence analysis of LIN28A Monoclonal Antibody (10-6523) with paraffin-embedded human testis tissue. 0.025 mg/ml primary antibody was followed by PE-conjugated goat anti-mouse IgG (whole molecule). PE emits orange fluorescence.