

## 10-6531: Mouse Monoclonal Antibody to Rat Serpinh1 (Center)(Clone: 134CT3.1.1)(Discontinued)

<b>Clonality :</b>	Monoclonal
<b>Clone Name :</b>	134CT3.1.1
<b>Application :</b>	WB,IHC-P
<b>Reactivity :</b>	Human,Rat
<b>Gene :</b>	Serpinh1
<b>Gene ID :</b>	29345
<b>Uniprot ID :</b>	P29457
<b>Format :</b>	Purified
<b>Alternative Name :</b>	Serpin H1, 47 kDa heat shock protein, Collagen-binding protein, Colligin, GP46, Serpinh1, Cbp1, Hsp47
<b>Isotype :</b>	Mouse IgG1
<b>Immunogen Information :</b>	Synthetic Peptide

### Product Info

<b>Amount :</b>	80 µl / 400 µl
<b>Purification :</b>	Protein G Chromatography
<b>Content :</b>	Purified monoclonal antibody supplied in PBS with 0.09% (W/V) sodium azide.
<b>Storage condition :</b>	Maintain refrigerated at 2-8°C for up to 2 weeks. For long term store at -20°C in small aliquots to prevent freeze-thaw cycles.

### Application Note

WB~1:100~200|| IHC-P~1:50~100

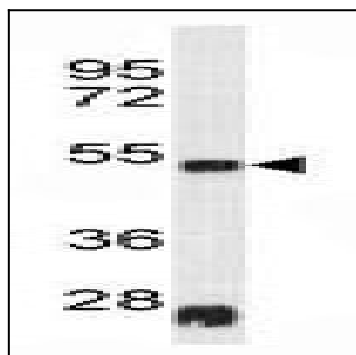


Figure 1: Western blot analysis of RAT SERPH Antibody (10-6531) in rat heart tissue lysates (35 µg/lane). SERPH was detected using the purified Mab with dilution (1:100)

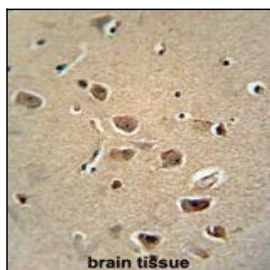


Figure 2: Immunohistochemistry analysis of RAT SERPH Monoclonal Antibody (10-6531) in formalin fixed and paraffin embedded human brain tissue followed by peroxidase conjugation of the secondary antibody and DAB staining. This data demonstrates the use of the RAT SERPH Monoclonal Antibody for immunohistochemistry. Clinical relevance has not been evaluated.