

10-6540: Mouse Monoclonal Antibody to LAMP2 (Clone: 157CT16.6.6)(Discontinued)

Clonality :	Monoclonal
Clone Name :	157CT16.6.6
Application :	WB,IF
Reactivity :	Mouse
Gene :	LAMP2
Gene ID :	3920
Uniprot ID :	P13473
Format :	Purified
Alternative Name :	Lysosome-associated membrane glycoprotein 2, LAMP-2, Lysosome-associated membrane protein 2, CD107 antigen-like family member B, CD107b, LAMP2
Isotype :	Mouse IgG1,Kappa
Immunogen Information :	Recombinant Protein

Description

Implicated in tumor cell metastasis. May function in protection of the lysosomal membrane from autodigestion, maintenance of the acidic environment of the lysosome, adhesion when expressed on the cell surface (plasma membrane), and inter-and intracellular signal transduction. Protects cells from the toxic effects of methylating mutagens.

Product Info

Amount :	80 µl / 400 µl
Purification :	Protein G Chromatography
Content :	Purified monoclonal antibody supplied in PBS with 0.09% (W/V) sodium azide.
Storage condition :	Maintain refrigerated at 2-8°C for up to 2 weeks. For long term store at -20°C in small aliquots to prevent freeze-thaw cycles.

Application Note

WB~1:100~1000|| IF~1:10~50

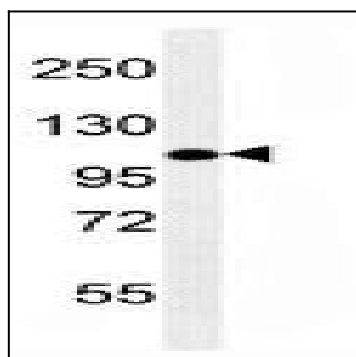


Figure 1: Western blot analysis of LAMP2 Antibody (10-6540) in mouse NIH-3T3 cell line lysates (35 µg/lane). This demonstrates the LAMP2 antibody detected the LAMP2 protein.

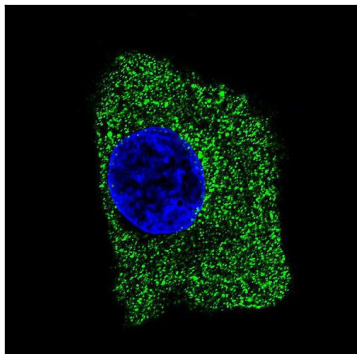


Figure 2: Confocal immunofluorescent analysis of LAMP2 Antibody (10-6540) with HepG2 cell followed by Alexa Fluor® 488-conjugated goat anti-mouse IgG (green). DAPI was used to stain the cell nuclear (blue).