

## 10-6541: Mouse Monoclonal Antibody to MAPK15 (Clone: 168CT10.6.6)(Discontinued)

<b>Clonality :</b>	Monoclonal
<b>Clone Name :</b>	168CT10.6.6
<b>Application :</b>	WB,IF
<b>Reactivity :</b>	Human
<b>Gene :</b>	MAPK15
<b>Gene ID :</b>	225689
<b>Uniprot ID :</b>	Q8TD08
<b>Format :</b>	Purified
<b>Alternative Name :</b>	Mitogen-activated protein kinase 15, MAP kinase 15, MAPK 15, Extracellular signal-regulated kinase 7, ERK-7, Extracellular signal-regulated kinase 8, ERK-8, MAPK15, ERK7, ERK8
<b>Isotype :</b>	Mouse IgG1,Kappa
<b>Immunogen Information :</b>	Recombinant Protein

### Product Info

<b>Amount :</b>	80 µl / 400 µl
<b>Purification :</b>	Protein G Chromatography
<b>Content :</b>	Purified monoclonal antibody supplied in PBS with 0.09% (W/V) sodium azide.
<b>Storage condition :</b>	Maintain refrigerated at 2-8°C for up to 2 weeks. For long term store at -20°C in small aliquots to prevent freeze-thaw cycles.

### Application Note

WB~1:100~500|| IF~1:10~50

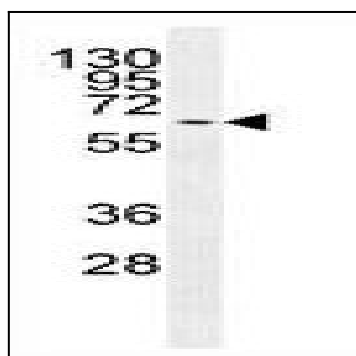


Figure 1: Western blot analysis of MAPK15 Antibody (10-6541) in MCF-7 cell line lysates (35 µg/lane). This demonstrates the MAPK15 antibody detected the MAPK15 protein.

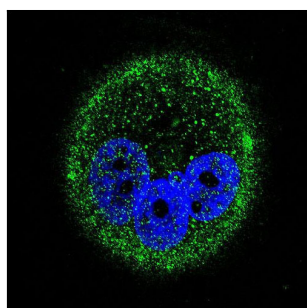


Figure 2: Confocal immunofluorescent analysis of MAPK15 Antibody (10-6541) with MCF-7 cell followed by Alexa Fluor® 488-conjugated goat anti-mouse IgG (green). DAPI was used to stain the cell nuclear (blue).