

## 10-6543: Mouse Monoclonal Antibody to MIPEP (Clone: 166CT22.3.7)(Discontinued)

<b>Clonality :</b>	Monoclonal
<b>Clone Name :</b>	166CT22.3.7
<b>Application :</b>	WB
<b>Reactivity :</b>	Human
<b>Gene :</b>	MIPEP
<b>Gene ID :</b>	4285
<b>Uniprot ID :</b>	Q99797
<b>Format :</b>	Purified
<b>Alternative Name :</b>	Mitochondrial intermediate peptidase, MIP, MIPEP, MIP
<b>Isotype :</b>	Mouse IgG1,Kappa
<b>Immunogen Information :</b>	Recombinant Protein

### Description

Cleaves proteins, imported into the mitochondrion, to their mature size.

### Product Info

<b>Amount :</b>	80 µl / 400 µl
<b>Purification :</b>	Protein G Chromatography
<b>Content :</b>	Purified monoclonal antibody supplied in PBS with 0.09% (W/V) sodium azide.
<b>Storage condition :</b>	Maintain refrigerated at 2-8°C for up to 2 weeks. For long term store at -20°C in small aliquots to prevent freeze-thaw cycles.

### Application Note

WB~1:100~1000

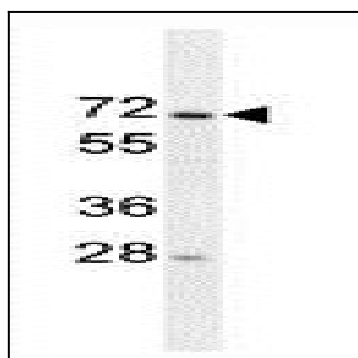


Figure 1: Western blot analysis of MIPEP Antibody (10-6543) in 293 cell line lysates (35µg/lane). This demonstrates the MIPEP antibody detected the MIPEP protein.