

## 10-6546: Mouse Monoclonal Antibody to PAX6 (Clone: 193CT15.2.2)(Discontinued)

<b>Clonality :</b>	Monoclonal
<b>Clone Name :</b>	193CT15.2.2
<b>Application :</b>	WB
<b>Reactivity :</b>	Human
<b>Gene :</b>	PAX6
<b>Gene ID :</b>	5080
<b>Uniprot ID :</b>	P26367
<b>Format :</b>	Purified
<b>Alternative Name :</b>	Paired box protein Pax-6, Aniridia type II protein, Oculorhombin, PAX6, AN2
<b>Isotype :</b>	Mouse IgM,Kappa
<b>Immunogen Information :</b>	Recombinant Protein

### Description

This gene encodes paired box gene 6, one of many human homologs of the *Drosophila melanogaster* gene *prd*. In addition to the hallmark feature of this gene family, a conserved paired box domain, the encoded protein also contains a homeo box domain. Both domains are known to bind DNA, and function as regulators of gene transcription. This gene is expressed in the developing nervous system, and in developing eyes. Mutations in this gene are known to cause ocular disorders such as aniridia and Peter's anomaly. Alternatively spliced transcript variants encoding either the same or different isoform have been found for this gene.

### Product Info

<b>Amount :</b>	80 µl / 400 µl
<b>Content :</b>	Purified monoclonal antibody supplied in PBS with 0.09% (W/V) sodium azide. This antibody is prepared by Euglobin precipitation followed by dialysis against PBS.
<b>Storage condition :</b>	Maintain refrigerated at 2-8°C for up to 2 weeks. For long term store at -20°C in small aliquots to prevent freeze-thaw cycles.

### Application Note

WB~1:100~1000

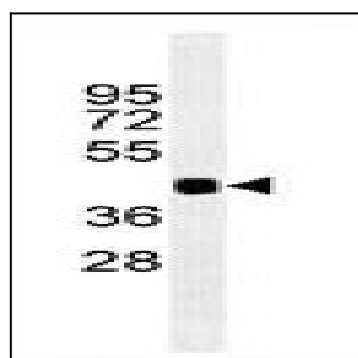


Figure 1: Western blot analysis of PAX6 Antibody (10-6546) in 293 cell line lysates (35 µg/lane). This demonstrates the PAX6 antibody detected the PAX6 protein.