

10-6554: Mouse Monoclonal Antibody to CD25 (Clone: 7G7B6)(Discontinued)

| | |
|---------------------------|--|
| Clonality : | Monoclonal |
| Clone Name : | 7G7B6 |
| Application : | WB |
| Reactivity : | Human |
| Gene : | IL2RA |
| Gene ID : | 3559 |
| Uniprot ID : | P01589 |
| Format : | Ascites |
| Alternative Name : | Interleukin-2 receptor subunit alpha, IL-2 receptor subunit alpha, IL-2-RA, IL-2R subunit alpha, IL2-RA, TAC antigen, p55, CD25, IL2RA |
| Isotype : | Mouse IgG2a |

Description

The interleukin 2 (IL2) receptor alpha (IL2RA) and beta (IL2RB) chains, together with the common gamma chain (IL2RG), constitute the high-affinity IL2 receptor. Homodimeric alpha chains (IL2RA) result in low-affinity receptor, while homodimeric beta (IL2RB) chains produce a medium-affinity receptor. Normally an integral-membrane protein, soluble IL2RA has been isolated and determined to result from extracellular proteolysis. Alternately-spliced IL2RA mRNAs have been isolated, but the significance of each is presently unknown. Mutations in this gene are associated with interleukin 2 receptor alpha deficiency.

Product Info

| | |
|----------------------------|---|
| Amount : | 0.1 ml |
| Content : | Mouse monoclonal antibody supplied in crude ascites with 0.09% (W/V) sodium azide. |
| Storage condition : | Maintain refrigerated at 2-8°C for up to 2 weeks. For long term store at -20°C in small aliquots to prevent freeze-thaw cycles. |

Application Note

WB~1:100~800

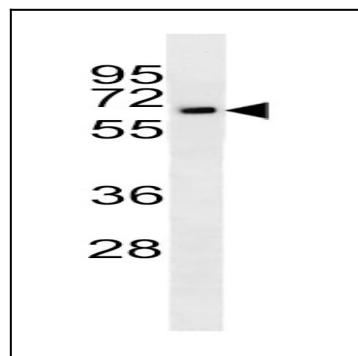


Figure 1: Western blot analysis of CD25 Antibody (10-6554) in Jurkat cell line lysates (35Î¼g/lane). This demonstrates the CD25 antibody detected the CD25 protein.