

## 10-6560: Mouse Monoclonal Antibody to S100B (Clone: 271CT14.3.3)(Discontinued)

<b>Clonality :</b>	Monoclonal
<b>Clone Name :</b>	271CT14.3.3
<b>Application :</b>	WB
<b>Reactivity :</b>	Mouse
<b>Gene :</b>	S100B
<b>Gene ID :</b>	6285
<b>Uniprot ID :</b>	P04271
<b>Format :</b>	Purified
<b>Alternative Name :</b>	Protein S100-B, S-100 protein beta chain, S-100 protein subunit beta, S100 calcium-binding protein B, S100B
<b>Isotype :</b>	Mouse IgM,Kappa
<b>Immunogen Information :</b>	Recombinant Protein

### Description

The protein encoded by this gene is a member of the S100 family of proteins containing 2 EF-hand calcium-binding motifs. S100 proteins are localized in the cytoplasm and/or nucleus of a wide range of cells, and involved in the regulation of a number of cellular processes such as cell cycle progression and differentiation. S100 genes include at least 13 members which are located as a cluster on chromosome 1q21; however, this gene is located at 21q22.3. This protein may function in Neurite extension, proliferation of melanoma cells, stimulation of Ca<sup>2+</sup> fluxes, inhibition of PKC-mediated phosphorylation, astrocytosis and axonal proliferation, and inhibition of microtubule assembly. Chromosomal rearrangements and altered expression of this gene have been implicated in several neurological, neoplastic, and other types of diseases, including Alzheimer's disease, Down's syndrome, epilepsy, amyotrophic lateral sclerosis, melanoma, and type I diabetes.

### Product Info

<b>Amount :</b>	80 µl / 400 µl
<b>Content :</b>	Purified monoclonal antibody supplied in PBS with 0.09% (W/V) sodium azide. This antibody is prepared by Euglobin precipitation followed by dialysis against PBS.
<b>Storage condition :</b>	Maintain refrigerated at 2-8°C for up to 2 weeks. For long term store at -20°C in small aliquots to prevent freeze-thaw cycles.

### Application Note

WB~1:100~250

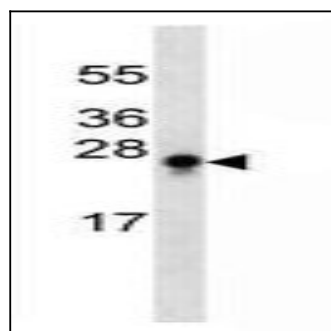


Figure 1: Western blot analysis of S100B Antibody (10-6560) in mouse liver tissue lysates (35 µg/lane). This demonstrates the S100B antibody detected the S100B protein.