

## 10-6573: Mouse Monoclonal Antibody to Myoglobin (Clone: 444CT19.2.1)(Discontinued)

<b>Clonality :</b>	Monoclonal
<b>Clone Name :</b>	444CT19.2.1
<b>Application :</b>	WB
<b>Reactivity :</b>	Human,Mouse
<b>Gene :</b>	MB
<b>Gene ID :</b>	4151
<b>Uniprot ID :</b>	P02144
<b>Format :</b>	Purified
<b>Alternative Name :</b>	Myoglobin, MB
<b>Isotype :</b>	Mouse IgG1
<b>Immunogen Information :</b>	Synthetic Peptide

### Description

This gene encodes a member of the globin superfamily and is expressed in skeletal and cardiac muscles. The encoded protein is a haemoprotein contributing to intracellular oxygen storage and transcellular facilitated diffusion of oxygen. At least three alternatively spliced transcript variants encoding the same protein have been reported.

### Product Info

<b>Amount :</b>	80 µl / 400 µl
<b>Purification :</b>	Protein G Chromatography
<b>Content :</b>	Purified monoclonal antibody supplied in PBS with 0.09% (W/V) sodium azide.
<b>Storage condition :</b>	Maintain refrigerated at 2-8°C for up to 2 weeks. For long term store at -20°C in small aliquots to prevent freeze-thaw cycles.

### Application Note

WB~1:1000

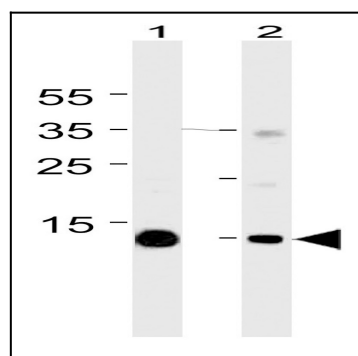


Figure 1: Western blot analysis of Myoglobin Antibody (10-6573) with Lane 1: mouse heart and Lane 2: skeletal muscle tissue lysates (35µg/lane). This demonstrates the Myoglobin antibody detected the Myoglobin protein.