

10-6575: Mouse Monoclonal Antibody to B2M (Clone: 467CT12.3.1)(Discontinued)

Clonality :	Monoclonal
Clone Name :	467CT12.3.1
Application :	WB
Reactivity :	Human
Gene :	B2M
Gene ID :	567
Uniprot ID :	P61769
Format :	Purified
Alternative Name :	Beta-2-microglobulin, Beta-2-microglobulin form pl 53, B2M
Isotype :	Mouse IgG1
Immunogen Information :	Synthetic Peptide

Description

This gene encodes a serum protein found in association with the major histocompatibility complex (MHC) class I heavy chain on the surface of nearly all nucleated cells. The protein has a predominantly beta-pleated sheet structure that can form amyloid fibrils in some pathological conditions. A mutation in this gene has been shown to result in hypercatabolic hypoproteinemia.

Product Info

Amount :	80 µl / 400 µl
Purification :	Protein G Chromatography
Content :	Purified monoclonal antibody supplied in PBS with 0.09% (W/V) sodium azide.
Storage condition :	Maintain refrigerated at 2-8°C for up to 2 weeks. For long term store at -20°C in small aliquots to prevent freeze-thaw cycles.

Application Note

WB~1:1000

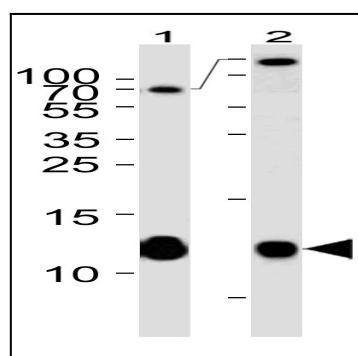


Figure 1: Western blot analysis of B2M Antibody (10-6575) with Lane 1: Jurkat and Lane 2: Hela cell line lysates (35µg/lane). This demonstrates the B2M antibody detected the B2M protein.