

10-6583: Mouse Monoclonal Antibody to ESR2 (Clone: 555CT18.5.5)(Discontinued)

Clonality :	Monoclonal
Clone Name :	555CT18.5.5
Application :	WB
Reactivity :	Human
Gene :	ESR2
Gene ID :	2100
Uniprot ID :	Q92731
Format :	Purified
Alternative Name :	Estrogen receptor beta, ER-beta, Nuclear receptor subfamily 3 group A member 2, ESR2, ESTRB, NR3A2
Isotype :	Mouse IgG1
Immunogen Information :	Synthetic Peptide

Description

This gene encodes a member of the family of estrogen receptors and superfamily of nuclear receptor transcription factors. The gene product contains an N-terminal DNA binding domain and C-terminal ligand binding domain and is localized to the nucleus, cytoplasm, and mitochondria. Upon binding to 17beta-estradiol or related ligands, the encoded protein forms homo- or hetero-dimers that interact with specific DNA sequences to activate transcription. Some isoforms dominantly inhibit the activity of other estrogen receptor family members. Several alternatively spliced transcript variants of this gene have been described, but the full-length nature of some of these variants has not been fully characterized.

Product Info

Amount :	80 µl / 400 µl
Purification :	Protein G Chromatography
Content :	Purified monoclonal antibody supplied in PBS with 0.09% (W/V) sodium azide.
Storage condition :	Maintain refrigerated at 2-8°C for up to 2 weeks. For long term store at -20°C in small aliquots to prevent freeze-thaw cycles.

Application Note

WB~1:100~500

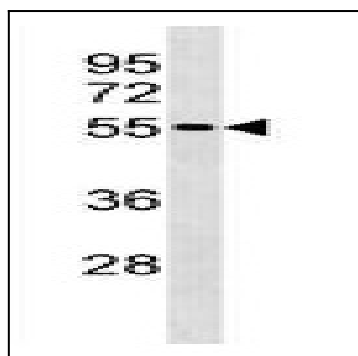


Figure 1: Western blot analysis of ESR2 Antibody (10-6583) in K562 cell line lysates (35 µg/lane). This demonstrates the ESR2 antibody detected the ESR2 protein.