

## 10-6587: Mouse Monoclonal Antibody to CREB1 (Clone: 1335CT115.203.189)(Discontinued)

<b>Clonality :</b>	Monoclonal
<b>Clone Name :</b>	1335CT115.203.189
<b>Application :</b>	WB
<b>Reactivity :</b>	Human,Mouse,Rat
<b>Gene :</b>	CREB1
<b>Gene ID :</b>	1385
<b>Uniprot ID :</b>	P16220
<b>Format :</b>	Purified
<b>Alternative Name :</b>	Cyclic AMP-responsive element-binding protein 1, CREB-1, cAMP-responsive element-binding protein 1, CREB1
<b>Isotype :</b>	Mouse IgG1,Kappa
<b>Immunogen Information :</b>	Recombinant Protein

### Description

Phosphorylation-dependent transcription factor that stimulates transcription upon binding to the DNA cAMP response element (CRE), a sequence present in many viral and cellular promoters. Transcription activation is enhanced by the TORC coactivators which act independently of Ser-133 phosphorylation. Involved in different cellular processes including the synchronization of circadian rhythmicity and the differentiation of adipose cells.

### Product Info

<b>Amount :</b>	80 µl / 400 µl
<b>Purification :</b>	Protein G Chromatography
<b>Content :</b>	Purified monoclonal antibody supplied in PBS with 0.09% (W/V) sodium azide.
<b>Storage condition :</b>	Maintain refrigerated at 2-8°C for up to 2 weeks. For long term store at -20°C in small aliquots to prevent freeze-thaw cycles.

### Application Note

WB~1:1000

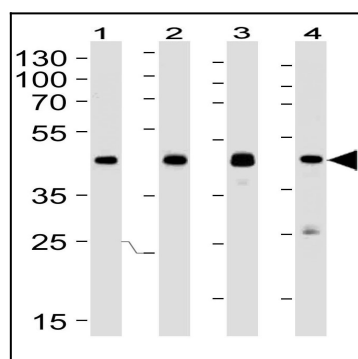


Figure 1: Western blot analysis of CREB1 Antibody (10-6587) lysates with Lane 1:A549, Lane 2: mouse Neuro-2a, Lane 3: mouse NIH/3T3, and Lane 4: rat C6 cell line. CREB1 Antibody was diluted at 1:1000 at each lane. A goat anti-mouse IgG H&L (HRP) at 1:3000 dilution was used as the secondary antibody. Lysates at 35µg per lane.