

## 10-6599: Mouse Monoclonal Antibody to UCHL1 (C-term)(Clone: 696CT2.1.4)(Discontinued)

<b>Clonality :</b>	Monoclonal
<b>Clone Name :</b>	696CT2.1.4
<b>Application :</b>	WB,IHC-P
<b>Reactivity :</b>	Human,Rat
<b>Gene :</b>	UCHL1
<b>Gene ID :</b>	7345
<b>Uniprot ID :</b>	P09936
<b>Format :</b>	Purified
<b>Alternative Name :</b>	Ubiquitin carboxyl-terminal hydrolase isozyme L1, UCH-L1, 6---, Neuron cytoplasmic protein 95, PGP 95, PGP95, Ubiquitin thioesterase L1, UCHL1
<b>Isotype :</b>	Mouse IgG1
<b>Immunogen Information :</b>	Synthetic Peptide

### Description

Ubiquitin-protein hydrolase involved both in the processing of ubiquitin precursors and of ubiquitinated proteins. This enzyme is a thiol protease that recognizes and hydrolyzes a peptide bond at the C-terminal glycine of ubiquitin. Also binds to free monoubiquitin and may prevent its degradation in lysosomes. The homodimer may have ATP-independent ubiquitin ligase activity.

### Product Info

<b>Amount :</b>	80 µl / 400 µl
<b>Purification :</b>	Protein G Chromatography
<b>Content :</b>	Purified monoclonal antibody supplied in PBS with 0.09% (W/V) sodium azide.
<b>Storage condition :</b>	Maintain refrigerated at 2-8°C for up to 2 weeks. For long term store at -20°C in small aliquots to prevent freeze-thaw cycles.

### Application Note

IHC-P~1:25|| WB~1:1000

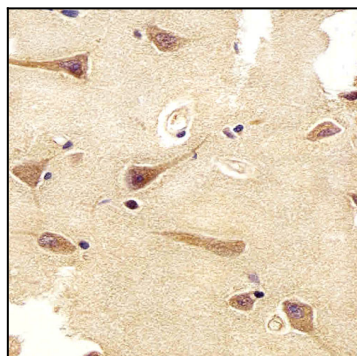


Figure 1: Immunohistochemical analysis of paraffin-embedded h brain section using UCHL1 Antibody (10-6599). UCHL1 Antibody was diluted at 1:25 dilution. A undiluted biotinylated goat polyvalent antibody was used as the secondary, followed by DAB staining.

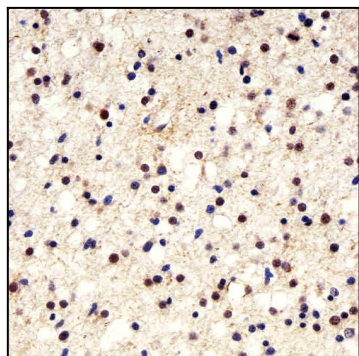


Figure 2: Immunohistochemical analysis of paraffin-embedded h astroglioma section using UCHL1 Antibody (10-6599). UCHL1 Antibody was diluted at 1:25 dilution. A undiluted biotinylated goat polyvalent antibody was used as the secondary, followed by DAB staining.

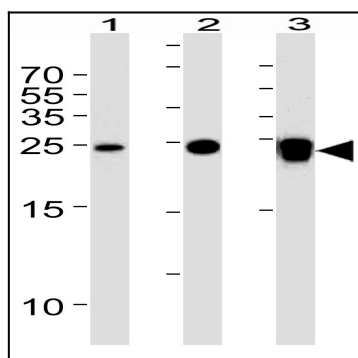


Figure 3: Western blot analysis of UCHL1 Antibody (10-6599) with Lane 1: 293T, Lane 2: NCI-H1299, Lane 3: rat PC-12 cell line lysates (35µg/lane). This demonstrates the UCHL1 antibody detected the UCHL1 protein.