

## 10-6603: Mouse Monoclonal Antibody to CASP3 (Clone: 1262CT521.280.101)(Discontinued)

<b>Clonality :</b>	Monoclonal
<b>Clone Name :</b>	1262CT521.280.101
<b>Application :</b>	WB
<b>Reactivity :</b>	Human
<b>Gene :</b>	CASP3
<b>Gene ID :</b>	836
<b>Uniprot ID :</b>	P42574
<b>Format :</b>	Purified
<b>Alternative Name :</b>	Caspase-3, CASP-3, Apopain, Cysteine protease CPP32, CPP-32, Protein Yama, SREBP cleavage activity 1, SCA-1, Caspase-3 subunit p17, Caspase-3 subunit p12, CASP3, CPP32
<b>Isotype :</b>	Mouse IgG1
<b>Immunogen Information :</b>	Recombinant Protein

### Description

Involved in the activation cascade of caspases responsible for apoptosis execution. At the onset of apoptosis it proteolytically cleaves poly(ADP-ribose) polymerase (PARP) at a '216-Asp-|-Gly-217' bond. Cleaves and activates sterol regulatory element binding proteins (SREBPs) between the basic helix-loop-helix leucine zipper domain and the membrane attachment domain. Cleaves and activates caspase-6, -7 and -9. Involved in the cleavage of huntingtin. Triggers cell adhesion in sympathetic neurons through RET cleavage.

### Product Info

<b>Amount :</b>	80 µl / 400 µl
<b>Purification :</b>	Protein G Chromatography
<b>Content :</b>	Purified monoclonal antibody supplied in PBS with 0.09% (W/V) sodium azide.
<b>Storage condition :</b>	Maintain refrigerated at 2-8°C for up to 2 weeks. For long term store at -20°C in small aliquots to prevent freeze-thaw cycles.

### Application Note

WB~1:2000

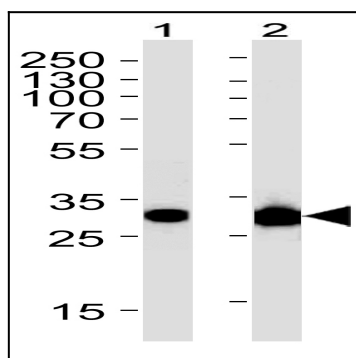


Figure 1: Western blot analysis of CASP3 Antibody (10-6603) with Lane 1: Jurkat, Lane 2: Ramos cell line lysates (35µg/lane). This demonstrates the CASP3 antibody detected the CASP3 protein.