

## 10-6621: Mouse Monoclonal Antibody to Hsp90 (Clone: 803CT9.1.2)(Discontinued)

<b>Clonality :</b>	Monoclonal
<b>Clone Name :</b>	803CT9.1.2
<b>Application :</b>	WB
<b>Reactivity :</b>	Human, Mouse
<b>Gene :</b>	HSP90AA1
<b>Gene ID :</b>	3320
<b>Uniprot ID :</b>	P07900
<b>Format :</b>	Purified
<b>Alternative Name :</b>	Heat shock protein HSP 90-alpha, Heat shock 86 kDa, HSP 86, HSP86, Lipopolysaccharide-associated protein 2, LAP-2, LPS-associated protein 2, Renal carcinoma antigen NY-REN-38, HSP90AA1, HSP90A, HSPC1, HSPCA
<b>Isotype :</b>	Mouse IgG1, Lambda

### Description

Molecular chaperone that promotes the maturation, structural maintenance and proper regulation of specific target proteins involved for instance in cell cycle control and signal transduction. Undergoes a functional cycle that is linked to its ATPase activity. This cycle probably induces conformational changes in the client proteins, thereby causing their activation. Interacts dynamically with various co-chaperones that modulate its substrate recognition, ATPase cycle and chaperone function.

### Product Info

<b>Amount :</b>	80 µl / 400 µl
<b>Purification :</b>	Protein G Chromatography
<b>Content :</b>	Purified monoclonal antibody supplied in PBS with 0.09% (W/V) sodium azide.
<b>Storage condition :</b>	Maintain refrigerated at 2-8°C for up to 2 weeks. For long term store at -20°C in small aliquots to prevent freeze-thaw cycles.

### Application Note

WB~1:1000

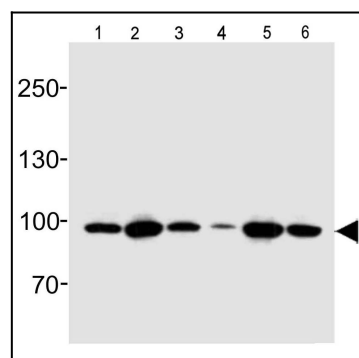


Figure 1: Western blot analysis of Hsp90 Antibody (10-6621) with lysates Lane 1: HeLa, Lane 2: K562, Lane 3: HepG2, Lane 4: mouse NIH/3T3, Lane 5: A2058, Lane 6: T47D cell line. Hsp90 Antibody was diluted at 1:1000 at each lane. A goat anti-mouse IgG H&L (HRP) at 1:10000 dilution was used as the secondary antibody. Lysates at 20 µg per lane.