

10-2001-F: Recombinant Human PD-1 rabbit monoclonal Antibody (Clone: ABMRR01) FITC Conjugated

Clonality :	Monoclonal
Clone Name :	ABMRR01
Application :	FACS
Reactivity :	Human
Conjugate :	FITC
Gene :	PDCD1
Gene ID :	5133
Uniprot ID :	Q15116
Format :	Purified
Alternative Name :	PDCD1, PD1, CD279
Isotype :	Rabbit IgG

Description

PDCD-1 (programmed cell death-1 protein), also designated CD279, is a type I transmembrane receptor and a member of the immunoglobulin gene superfamily. It is expressed on activated T-cells, B-cells, and myeloid cells. Anti-PDCD-1 is a marker of angioimmunoblastic lymphoma and suggests a unique cell of origin for this neoplasm. Unlike CD10 and BCL6, PDCD-1 is expressed by few B-cells, so anti-PDCD-1 may be a more specific and useful diagnostic marker in angioimmunoblastic lymphoma. In addition, PDCD-1 expression provides evidence that angioimmunoblastic lymphoma is a neoplasm derived from germinal center-associated T-cells.

Product Info

Amount :	25 µg / 100 µg
Purification :	Protein A Chromatography
Content :	0.2 mg/ml in Tris buffer containing 0.05% Azide
Storage condition :	Store the antibody at 4°C, stable for 6 months.

Application Note

FACS: 0.5-1 µg/10⁶

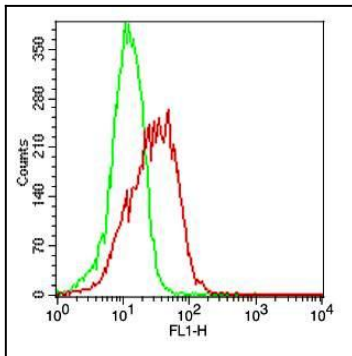


Fig-1: Cell surface flow analysis of FITC conjugated Rabbit recombinant hPD-1 antibody in PHA treated PBMC (Lymphocyte gated) using 0.5 $\mu\text{g}/10^6$ cells of FITC conjugated Rabbit recombinant hPD-1 antibody (Clone: ABMRR01). Green represent unstimulated and red represent stimulated PBMC.