

10-3503: Monoclonal Antibody to mouse MD-1 (Clone : MD113)(Discontinued)

Clonality : Monoclonal
Clone Name : MD113
Application : FACS
Reactivity : Mouse
Gene : Ly86
Gene ID : 17084
Uniprot ID : O88188
Format : Purified
Isotype : Rat IgG2b

Description

The monoclonal antibody 10-3503 reacts with mouse MD-1. MD-1 (22-25 kD) is an extracellular protein associated with the extracellular domain of RP105. The latter is a type 1 transmembrane protein with leucine-rich repeats. RP105 is similar to Drosophila Toll. MD-1 associated with RP105 (similar to TLR4/MD-2) appears to be an essential molecule that helps RP105 on B-cells to signal to LPS. The MD113 antibody is antagonistic in LPS-induced B-cell proliferation and B7.2 up-regulation.

Product Info

Amount : 1 (Clone : MD113)(Discontinued) / 500 µg
Content : 0.5 mg, 0.2 µm filtered antibody solution in PBS, containing 0.1% bovine serum albumin and 0.02% sodium azide.
Storage condition : Product should be stored at 4 °C. Under recommended storage conditions, product is stable for one year.

Application Note

The monoclonal antibody MD113 can be used for flow cytometry and functional studies. The monoclonal antibody cannot be used for Western blot and immunoprecipitation.

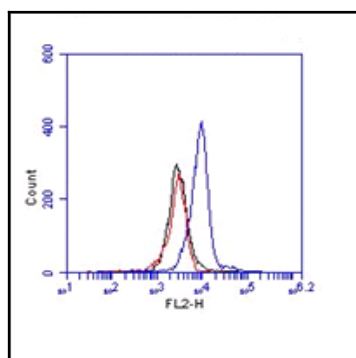


Figure-1: Flow analysis of mouse MD-1 antibody (Clone: MD113): Cell surface staining of Raw cells, blue represents mouse MD-1, red represents Isotype control Rat IgG2b. 1:50 dilution of antibody was used. Goat Anti-Rat PE was used as secondary antibody.