

## 10-3505: Monoclonal Antibody to mouse TLR2 (Clone : 6C2)(Discontinued)

**Clonality :** Monoclonal  
**Clone Name :** 6C2  
**Application :** IP,FACS  
**Reactivity :** Mouse  
**Gene :** Tlr2  
**Gene ID :** 24088  
**Uniprot ID :** Q9QUN7  
**Format :** Purified  
**Isotype :** Rat IgG2b

### Description

Monoclonal antibody 10-3505 reacts with mouse Toll-like receptor 2 (TLR2, CD282). Toll-like receptors (TLR) are highly conserved throughout evolution and have been implicated in the innate defense to many pathogens. In *Drosophila* toll is required for the anti-fungal response, while the related 18-wheeler is involved in antibacterial defenses. In mammals, TLR identified as type I transmembrane signaling receptors with pattern recognition capabilities, have been implicated in the innate host defense to pathogens. TLR2 has been identified as a receptor that is central to the innate immune response to lipoproteins of gram-negative bacteria, several whole gram-positive bacteria, as well as a receptor for peptidoglycan and lipoteichoic acid and other bacterial cell membrane products. A functional interaction between TLR2 and TLR6 in the cellular response to various bacterial products has been discovered. The currently accepted paradigm regards TLR2 as an essential receptor for many eubacterial cell wall components, including lipoproteins and peptidoglycan. Bacterial species as diverse as mycobacteria, spirochetes, mycoplasma, *Staphylococcus aureus*, and *Streptococcus pneumoniae* have all been shown to mediate cellular activation via TLR2.

### Product Info

**Amount :** Monoclonal Antibody to mouse TLR2 (Clone : 6C2)(Discontinued) / 500 µg  
**Content :** 0.5 mg, 0.2 µm filtered antibody solution in PBS, containing 0.1% bovine serum albumin and 0.02% sodium azide.  
**Storage condition :** Product should be stored at 4 °C. Under recommended storage conditions, product is stable for one year.

### Application Note

The monoclonal antibody 10-3505 can be used for flow cytometry and immuno precipitation. The antibody works in immunofluorescence of fixed RAW cells. The antibody is not useful for Western blotting.

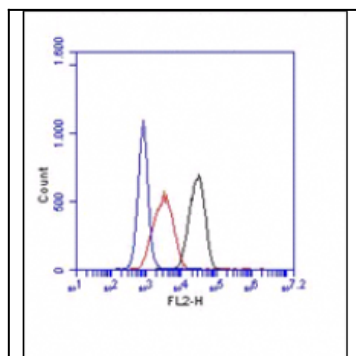


Fig. 1: Flow analysis of mouse TLR2 antibody (Clone:6C2): Cell surface staining of Raw cells, blue represents mouse TLR2, red represents Isotope control Rat IgG2b. 1:50 dilution of antibody was used. Goat Anti-Rat PE was used as secondary antibody.