

## 10-11503: Mouse Monoclonal Antibody to Bcl-2(Clone: 124)(Discontinued)

<b>Clonality :</b>	Monoclonal
<b>Clone Name :</b>	124
<b>Application :</b>	IHC
<b>Reactivity :</b>	Human
<b>Gene :</b>	BCL2
<b>Gene ID :</b>	596
<b>Uniprot ID :</b>	P10415
<b>Format :</b>	Purified
<b>Alternative Name :</b>	Apoptosis regulator Bcl-2, BCL2
<b>Isotype :</b>	Mouse IgG1, Kappa
<b>Immunogen Information :</b>	A synthetic peptide, aa41-54 (GAAPAPGIFSS QPG-Cys) of human Bcl-2 protein.

### Description

This antibody recognizes a protein of 25-26kDa, identified as bcl-2 alpha oncoprotein. It shows no cross-reaction with Bcl-x or Bax protein. Expression of bcl-2 alpha oncoprotein inhibits the programmed cell death (apoptosis). In most follicular lymphomas, neoplastic germinal centers express high levels of bcl-2 alpha protein, whereas the normal or hyperplastic germinal centers are negative. This antibody is valuable when distinguishing between reactive and neoplastic follicular proliferation in lymph node biopsies. It may also be used in distinguishing between those follicular lymphomas that express bcl-2 protein and small number in which neoplastic cells are bcl-2 negative.

### Product Info

<b>Amount :</b>	0.5 ml
<b>Content :</b>	This product is supplied as a purified immunoglobulin and contains sodium azide as a preservative.
<b>Storage condition :</b>	Store at 2-8°C.

### Application Note

IHC : 1:50-1:100

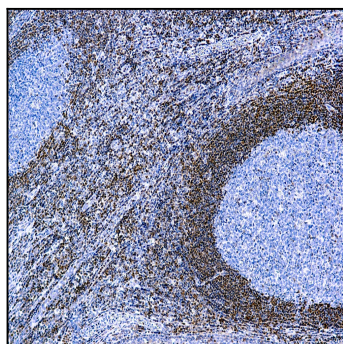


Figure 1 : Formalin fixed paraffin embedded human tonsil stained with Bcl-2 Oncoprotein ( 10-11503).