

## 10-11508: Mouse Monoclonal Antibody to Cytomegalovirus(Clone: DDG9 + CCH2)(Discontinued)

<b>Clonality :</b>	Monoclonal
<b>Clone Name :</b>	DDG9 + CCH2
<b>Application :</b>	IHC
<b>Reactivity :</b>	Human
<b>Format :</b>	T.C. Sup.
<b>Isotype :</b>	DDG9, Mouse IgG2a, Kappa; CCH2, Mouse IgG1, Kappa
<b>Immunogen Information :</b>	BALB/C mice were immunized with cytomegalovirus infected cell lysate.

### Description

This cocktail antibody stains infected cells giving a nuclear staining pattern with an immediate early and an early CMV antigen.

### Product Info

<b>Amount :</b>	0.5 ml
<b>Content :</b>	This product is supplied as a tissue culture supernatant and contains sodium azide as a preservative.
<b>Storage condition :</b>	Store at 2-8°C.

### Application Note

IHC : 1:10-1:25

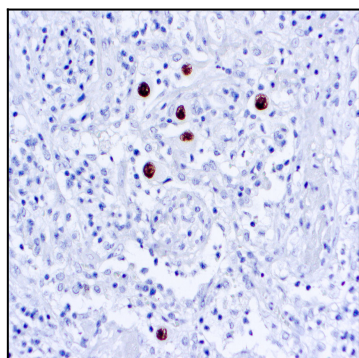


Figure 1 : Formalin fixed paraffin embedded tissue stained with CMV antibody ( 10-11508).