

**10-11517: Mouse Monoclonal Antibody to Laminin(Clone: 4C7)(Discontinued)**

<b>Clonality :</b>	Monoclonal
<b>Clone Name :</b>	4C7
<b>Application :</b>	IHC
<b>Reactivity :</b>	Human
<b>Gene :</b>	LAMA1
<b>Gene ID :</b>	284217
<b>Uniprot ID :</b>	P25391
<b>Format :</b>	T.C. Sup.
<b>Alternative Name :</b>	Laminin A chain, Laminin-1 subunit alpha, Laminin-3 subunit alpha, S-laminin subunit alpha, LAMA
<b>Isotype :</b>	Mouse IgG2a, Kappa
<b>Immunogen Information :</b>	The A chain of human laminin.

**Description**

This antibody reacts with the terminal globular domain of the A chain. The staining with this antibody is sensitive to fixation of paraffin tissues and use of proteolytic enzymatic treatment.

**Product Info**

<b>Amount :</b>	0.5 ml
<b>Content :</b>	This antibody is supplied as tissue culture supernatant containing sodium azide as preservative.
<b>Storage condition :</b>	Store at 2-8°C.

**Application Note**

IHC : 1:5-1:20

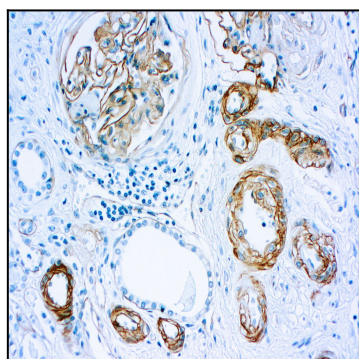


Figure 1 : Formalin fixed paraffin embedded renal carcinoma stained with Laminin antibody ( 10-11517).