

## 10-11520: Mouse Monoclonal Antibody to ACTH(Clone: AH26)(Discontinued)

Clonality :	Monoclonal
Clone Name :	AH26
Application :	IHC
Reactivity :	Human
Gene :	POMC
Gene ID :	5443
Uniprot ID :	P01189
Format :	Purified
Alternative Name :	Pro-opiomelanocortin, Corticotropin-lipotropin, NPP, Melanotropin gamma, Gamma-MSH, Potential peptide, Corticotropin, Adrenocorticotrophic hormone, Alpha-MSH, Corticotropin-like intermediary peptide, CLIP, Beta-LPH, Beta-MSH
Isotype :	Mouse IgG1
Immunogen Information :	BALB/C mice were injected with a synthetic peptide corresponding to amino acids 1-24 from the N-terminal of human ACTH.

### Description

This antibody is specific to an epitope on the N-terminus of ACTH. This antibody stains corticotrophs in the adenohypophysis and is useful in the classification of pituitary adenomas.

### Product Info

Amount :	0.5 ml
Content :	This antibody is supplied as purified immunoglobulin containing sodium azide as preservative.
Storage condition :	Store at 2-8°C.

### Application Note

IHC : 1:50-1:100

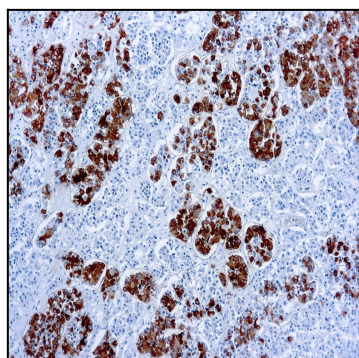


Figure 1 : Formalin fixed paraffin embedded human pituitary stained with ACTH antibody ( 10-11520).