

10-11531: Mouse Monoclonal Antibody to Myosin(Clone: MY32)(Discontinued)

Clonality :	Monoclonal
Clone Name :	MY32
Application :	IHC
Reactivity :	Bovine
Format :	Ascites
Isotype :	Mouse IgG1
Immunogen Information :	Rabbit muscle myosin.

Description

This antibody recognizes heavy chain of human skeletal myosin. It does not stain cardiac or smooth muscle myosin. This antibody stains the fast twitch (type II) isomyosin molecule.

Product Info

Amount :	0.5 ml
Content :	This antibody is supplied as diluted ascites containing sodium azide as preservative.
Storage condition :	Store at 2-8°C.

Application Note

IHC : 1:25-1:50

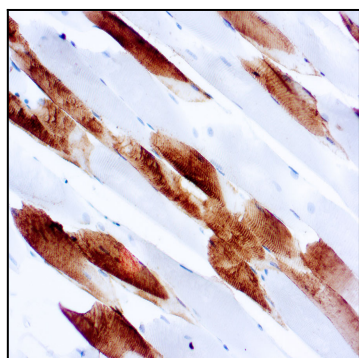


Figure 1 : Formalin fixed paraffin embedded human skeletal muscle stained with Myosin antibody (10-11531).