

10-11536: Rabbit Polyclonal Antibody to Somatostatin Receptor(Discontinued)

Clonality : Polyclonal

Application : IHC

Reactivity : Human

Format : Purified

Isotype : Rabbit IgG

Immunogen Information : A synthetic peptide derived from the C-terminus of rat somatostatin protein.

Description

This antibody reacts with a 60 kDa protein, known as somatostatin receptor. Somatostatin family of receptors has five members, sst1-sst5, as well as two isoforms of somatostatin receptor 2, sst2A and sst2B. They are coupled to G protein and are involved in regulation of numerous processes including secretion of insulin, glucagons and growth hormone and excitation of neurons in central and peripheral nervous system.

Product Info

Amount : 0.5 ml

Content : Purified immunoglobulin fraction of rabbit antiserum against human somatostatin receptor containing sodium azide as preservative.

Storage condition : Store at 2-8°C.

Application Note

IHC : 1:50-1:75

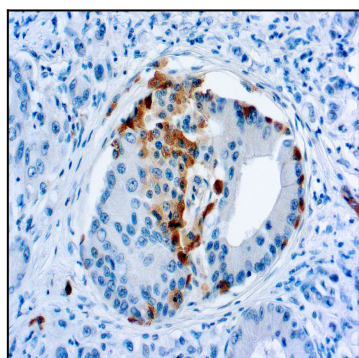


Figure 1 : Formalin fixed paraffin embedded human pancreas stained with Somatostatin Receptor antibody (10-11536).