

## 10-11553: Rabbit Polyclonal Antibody to Gastrin(Discontinued)

<b>Clonality :</b>	Polyclonal
<b>Application :</b>	IHC
<b>Reactivity :</b>	Human
<b>Gene :</b>	Gast
<b>Gene ID :</b>	14459
<b>Uniprot ID :</b>	P48757
<b>Format :</b>	Purified
<b>Alternative Name :</b>	Gastrin-34, G34, Gas
<b>Isotype :</b>	Rabbit IgG
<b>Immunogen Information :</b>	Recombinant gastrin conjugated to KLH.

### Description

The antibody is specific against gastrin-containing cells. This anti-body reacts with human gastrin I and human gastrin I fragments. No cross-reactivity was observed with rat gastrin, human big gastrin, human gastrin releasing peptide, sulfated cholecystokinin amide, non-sulfated cholecystokinin amide and cholecystokinin.

### Product Info

<b>Amount :</b>	0.5 ml
<b>Content :</b>	Purified immunoglobulin fraction of rabbit antiserum against GLUT-1 containing sodium azide as preservative.
<b>Storage condition :</b>	Store at 2-8°C.

### Application Note

IHC : 1:50-1:100

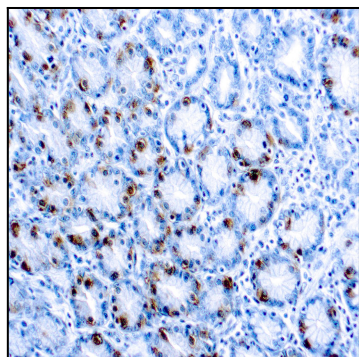


Figure 1 : Formalin fixed paraffin embedded stomach stained with gastrin antibody-300dpi ( 10-11553).