

10-11554: Rabbit Polyclonal Antibody to GLUT-1(Discontinued)

Clonality :	Polyclonal
Application :	IHC
Reactivity :	Human
Format :	Purified
Isotype :	Rabbit IgG
Immunogen Information :	A synthetic peptide derived from C-terminal of human GLUT-1.

Description

This antibody reacts with a 55 kDa protein. Glucose is fundamental to the metabolism of mammalian cells. Several glucose transporter protein (Glut) isoforms have been identified and shown to function in response in insulin and IGF-1 induced signaling. GLUT-1 is detectable in many human tissues including those of the colon, lung, stomach, esophagus and breast. GLUT-1 immunoreactivity in some cancers, including trans-carcinoma of the urinary bladder, has been associated with aggressive behavior.

Product Info

Amount :	0.5 ml
Content :	Purified immunoglobulin fraction of rabbit antiserum against GLUT-1 containing sodium azide as preservative.
Storage condition :	Store at 2-8°C.

Application Note

IHC : 1:50-1:100

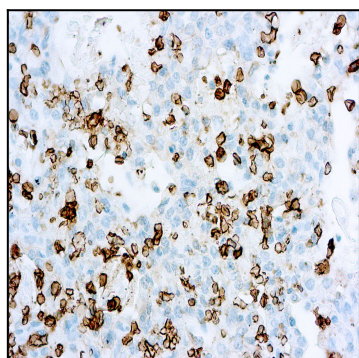


Figure 1 : Formalin fixed paraffin embedded human bladder stained with GLUT-1 antibody (10-11554).