

## 10-11558: Mouse Monoclonal Antibody to Epidermal Growth Factor(Clone: 111.6)(Discontinued)

<b>Clonality :</b>	Monoclonal
<b>Clone Name :</b>	111.6
<b>Application :</b>	IHC
<b>Reactivity :</b>	Human
<b>Gene :</b>	EGFR
<b>Gene ID :</b>	1956
<b>Uniprot ID :</b>	P00533
<b>Format :</b>	Purified
<b>Alternative Name :</b>	Proto-oncogene c-ErbB-1, Receptor tyrosine-protein kinase erbB-1, ERBB, ERBB1, HER1
<b>Isotype :</b>	Mouse IgG1
<b>Immunogen Information :</b>	BALB/C mice were injected with extracellular domain of human recombinant EGFR protein.

### Description

This antibody is specific to a 170 kDa protein. EGF-Receptor is a member of the type I family of growth factor receptors. The antibody recognizes an epitope mapping in the extracellular domain of EGFR. Overexpression of EGFR has been reported in tumors of breast, brain, bladder, lung, stomach, head and neck, esophagus, cervix, vulva, ovary and endometrium. EGFR is over expressed in squamous cell carcinoma.

### Product Info

<b>Amount :</b>	0.5 ml
<b>Content :</b>	This antibody is supplied as purified immunoglobulin fraction containing sodium azide as preservative.
<b>Storage condition :</b>	Store at 2-8°C.

### Application Note

IHC : 1:25-1:50

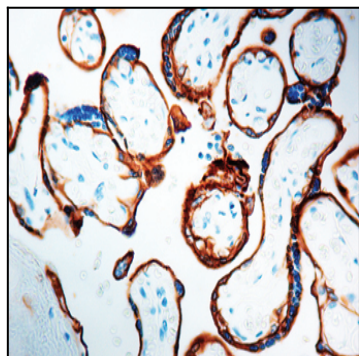


Figure 1 : Formalin fixed paraffin embedded human placenta stained with EGFR antibody ( 10-11558).