

10-12501: Mouse Monoclonal Antibody to CK20(Clone :BS101) (Discontinued)

Clonality :	Monoclonal
Clone Name :	BS101
Application :	IHC
Reactivity :	Human
Gene :	KRT20
Gene ID :	54474
Uniprot ID :	P35900
Alternative Name :	KRT20, Cytokeratin-20, Cytokeratin 20, CK20, K20, Keratin 20, Keratin-20, KRT21, CK-20, Protein IT

Product Info

Amount :	0.1 ml / 0.5 ml
Content :	TRIS with 0.03% sodium azide, pH7.2
Storage condition :	Store at 4°C

Application Note

Immunohistochemical Analysis :-1:250

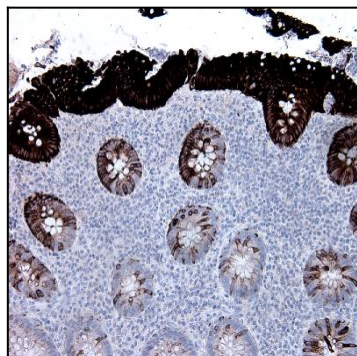


Figure-1: Human appendix has been stained using CK20 antibody (Clone: BS101) with 1:250 dilution.

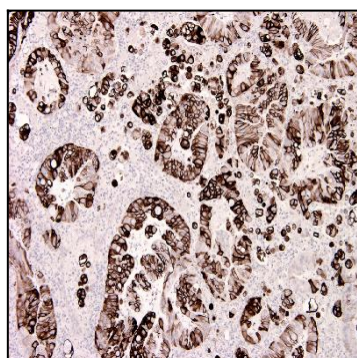


Figure-2: Urinary bladder carcinoma section has been stained using CK20 antibody (Clone: BS101) with 1:250 dilution. Urinary bladder carcinoma cells have strong and intensive signal.

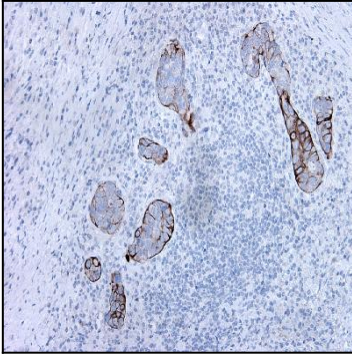


Figure-3: Lymph node section with metastasis of colon carcinoma has been stained using CK20 antibody (Clone: BS101) with 1:250 dilution. Neoplastic cells have moderate to strong CK20 positivity.